

SOUTHERN RAILWAY

DERRICK DIAGRAMS

1967

THIS DOCUMENT PROVIDED BY ALLEN STANLEY,
RAILROAD DATA EXCHANGE

POSTED BY: DONNIE DIXON
February 13, 2010



REVISED 8/30/51

RHH Copy

DERRICK DIAGRAMS

SOUTHERN RAILWAY
MECHANICAL DEPARTMENT
ATLANTA, GEORGIA

1374

LIST AND DESCRIPTION OF DERRICKS SOUTHERN RAILWAY SYSTEM

LOCATION	SOU. RY NUMBER	BUILT BY	BLDR'S NUMBER	CAPACITY (TONS)	WEIGHT NOTE(b)	DATE BUILT	SPEED MPH ^a	SELF- PROPELLED
Alexandria	D- 66	Buc.	251	150	243500	1919	30	Yes
Monroe	D- 72	Ind.	4730	150	259500	1926	25	Yes
Richmond	D- 33	Ind.	1693	75	171600	1907	25	Yes
Pinners Point	D- 24	Buc.	119	40	155300	1901	25	No
Greensboro	D- 27	Buc.	129	75	157300	1904	25	No
Greensboro	D- 29	Buc.	147	75	155000	1906	30	No
Winston-Salem	D- 1	Ind.	963	50	145300	1902	25	No
Spencer (c)	D- 71	Ind.	4729	150	259400	1926	30	Yes
Charlotte	D- 30	Buc.	146	75	154200	1906	25	No
Columbia	D- 37	Ind.	2546	120	232500	1912	30	Yes
Greenville	D- 73	Ind.	4731	150	263800	1926	30	Yes
Spartanburg	D- 65	Buc.	250	150	237400	1919	30	Yes
Charleston	D- 58	Ind.	2038	75	171300	1909	25	No
Appalachia	D- 40	Ind.	2690	120	237600	1913	20	No
Asheville	D- 67	Buc.	252	150	241000	1919	25	Yes
Knoxville	D- 68	Buc.	253	150	239000	1919	25	Yes
Knoxville	D- 32	Ind.	1649	75	174200	1907	25	No
Sheffield	D- 69	Buc.	256	150	237750	1919	25	No
Memphis (c)	D- 41	Ind.	2691	120	237200	1913	25	Yes
Atlanta	D- 70	Ind.	4728	150	259200	1926	25	Yes
Atlanta	D- 28	Buc.	145	75	167000	1906	25	No
Macon	D- 36	Ind.	2561	100	194400	1912	25	Yes
Valdosta	D-6930	Ind.	1210	50	149600	1905	25	No
Princeton (c)	D- 25	Buc.	127	75	175200	1904	25	No
Coapman	D- 56	Ind.	1389	75	167900	1905	25	Yes
Ludlow	D-5994	Ind.	1786	100	220600	1907	25	No
Danville, Ky. (c)	D-5990	Ind.	2541	120	236200	1912	25	Yes
Somerset (c)	D-5988	Ind.	4724	150	265000	1926	25	Yes
Oakdale (c)	D-5989	Ind.	4725	150	264800	1926	25	Yes
Chattanooga (c)	D- 74	Ind.	4732	150	260900	1926	25	Yes
Chattanooga	D-5993	Ind.	1336	40	143300	1904	25	No
Birmingham (c)	D-5991	Ind.	2783	120	241800	1913	25	Yes
Birmingham (c)	D-6471	Ind.	4727	150	260000	1926	25	Yes
Selma, Ala.	D- 26	Buc.	128	75	164100	1904	20	No
Mobile	D- 2	Ind.	964	50	142700	1902	20	No
New Orleans (c)	D-6470	Ind.	1550	100	224100	1907	25	Yes
Meridian (c)	D-8590	Ind.	1829	100	208000	1909	25	Yes

NOTE (a): Speed shown is maximum speed permissible where track conditions are good. When derricks are moved over branch or side lines, speed should be reduced in keeping with track conditions encountered.

(b): Stencilled weight - includes coal, water and ballast

(c): Oil buffer

OFFICE OF Superintendent, Motive Power
Charlotte, North Carolina

INDEX OF DERRICK DIAGRAMS						
SOUTHERN RY. NUMBER	BUILDER'S NUMBER	NAME OF BUILDER	CAPACITY	DIAGRAM NUMBER	REVISIONS	PAGE
D-1	12438	INDUSTRIAL BROWNHOIST	250 TON	32-F-60	1/24/61	1
D-2	12480	" "	" "	" "	" "	1
D-3	12485	" "	" "	" "	" "	1
D-4	12486	" "	" "	" "	" "	1
D-5	12487	" "	" "	" "	" "	1
D-6	12488	" "	" "	" "	" "	1
D-20	2563	INDUSTRIAL WORKS	" "	" "	" "	1
D-21	4401	" "	100 "	34-F-85	" "	1
D-22	4725	" "	150 "	34-F-86	" "	2
D-36	2561	" "	150 "	34-F-87	" "	3
D-37	2546	" "	100 "	27-F-29	6/12/62	4
D-41	2691	" "	120 "	27-F-30	5/10/60	5
D-65	250	BUCYRUS COMPANY	150 "	27-F-34	7/14/25	6
D-66	251	" "	150 "	27-F-37	5/10/60	7
D-67	252	" "	150 "	27-F-38	" "	8
D-68	253	" "	150 "	27-F-39	5/18/60	9
D-69	256	" "	150 "	27-F-40	5/10/60	10
D-70	4728	INDUSTRIAL WORKS	150 "	27-F-41	" "	11
D-71	4729	" "	150 "	28-F-58	" "	12
D-72	4730	" "	150 "	26-F-64	" "	13
D-73	4731	" "	150 "	28-F-65	" "	14
D-74	4732	" "	150 "	28-F-66	" "	15
D-5988	4724	" "	150 "	28-F-67	5/18/60	16
D-5989	4725	" "	150 "	28-F-68	5/10/60	17
D-5991	2783	" "	150 "	28-F-69	" "	18
D-6470	1550	" "	120 "	27-F-43	5/18/60	19
D-6471	4727	" "	100 "	27-F-47	6/12/62	20
W-50	4403	" "	150 "	28-F-70	5/10/60	21
			150 "	34-F-88	" "	22
						23

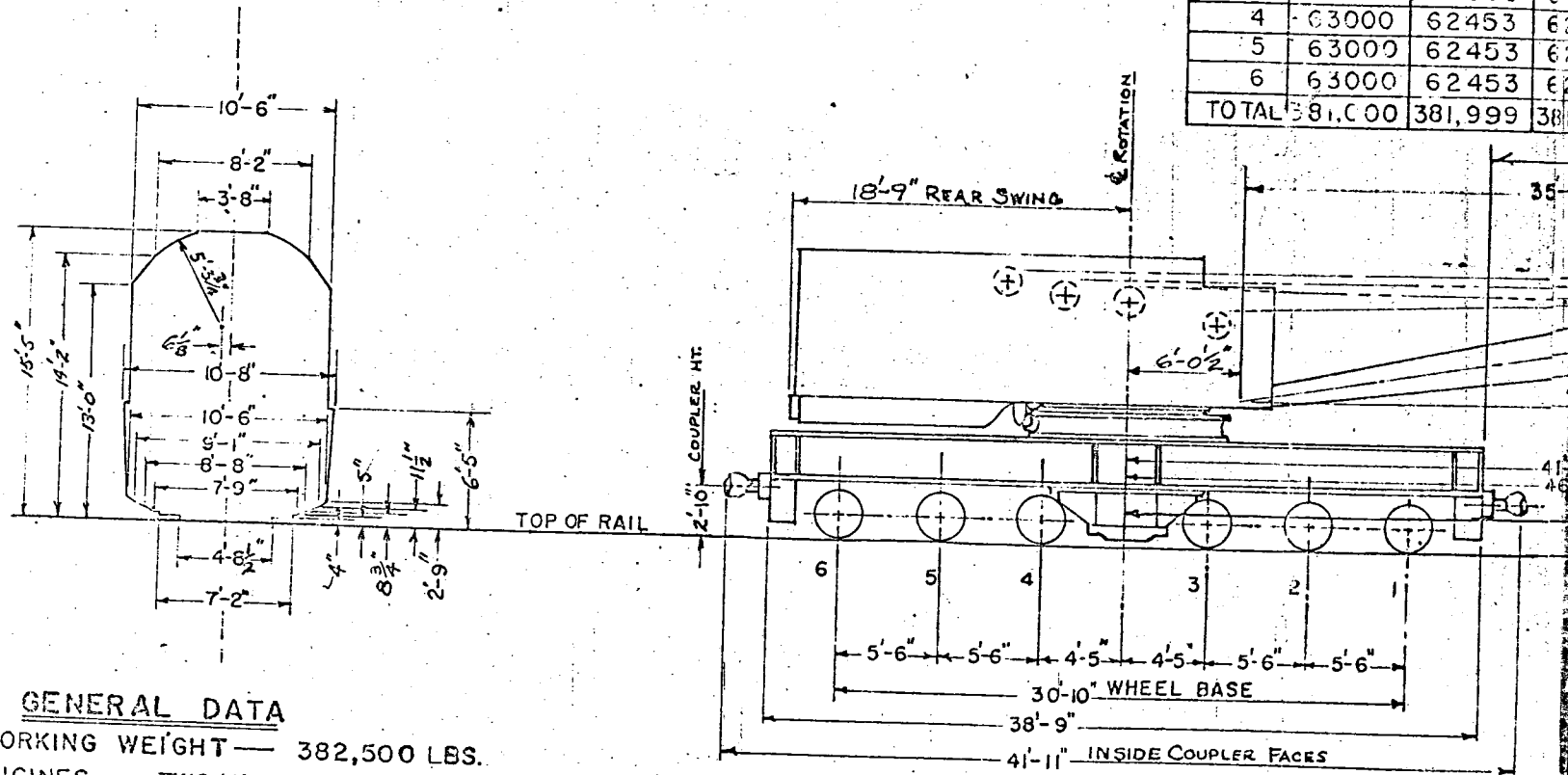
Level
2603

ALL DERRICKS ARE STEAM POWERED
EXCEPT DIESEL POWERED DERRICKS
D-1, D-2, D-3, D-4, D-5, D-6, D-67, D-72

32-F-80

SOUTHERN RAILWAY
 WASHINGTON D C JUNE 25, 1960
 DIAGRAM OF 250 TON DIESEL DERRICK, "TYPE Z"
 BUILT BY INDUSTRIAL BROWNHOIST CORP.

	DERRICK AXLE LOADS		
	D-1	D-2	B-2
1	64000	64880	64320
2	64000	64880	64320
3	64000	64880	64320
4	63000	62453	62393
5	63000	62453	62393
6	63000	62453	62393
TOTAL	381,000	381,999	381,000

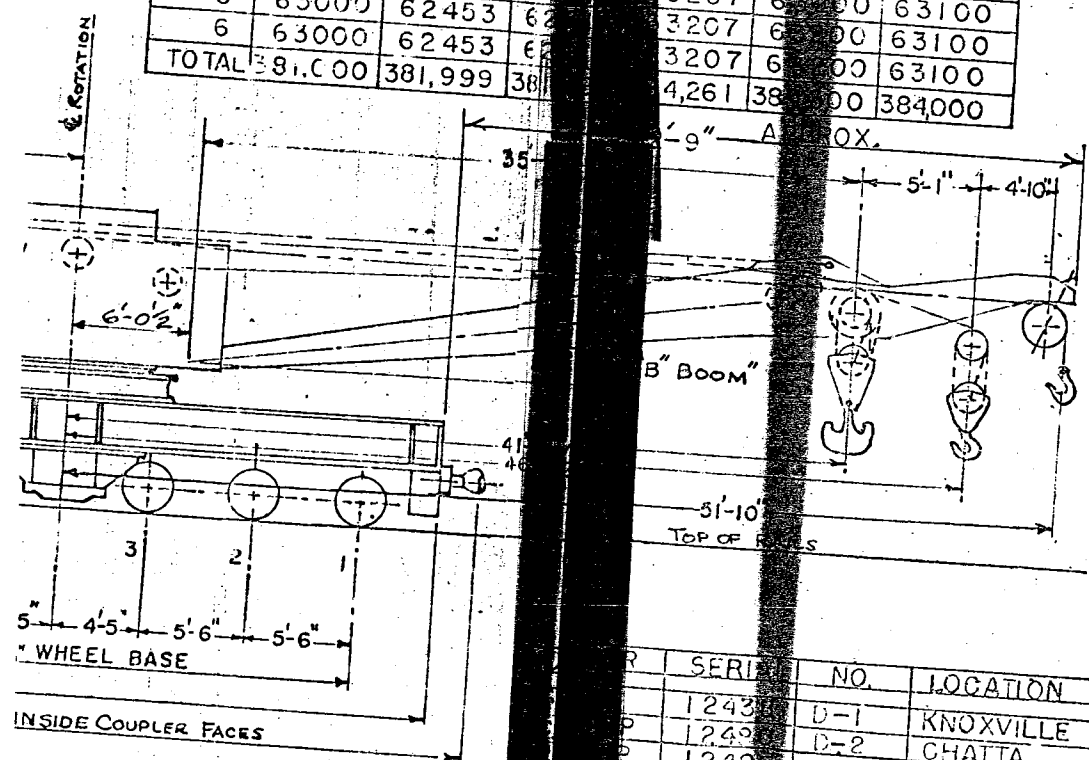


GENERAL DATA

- WORKING WEIGHT — 382,500 LBS.
- ENGINES — TWO (2) GM 6-71, 160HP@1800 RPM EA.
- FUEL TANK CAPACITY — 285 GAL.
- JOURNALS & BEARINGS — 6 1/2" X 12" TIMKEN ROLLER BEARING JOURNALS, STD TIMKEN ADAPTERS & "AP" BEARINGS
- BRAKES — WAB "AB" BRKS. & COBRA BRK. SHOES WITH TWO (2) MINER LEVER TYPE HAND BRAKES.
- COUPLER & DRAFT GEAR — AAR TYPE "E" SWIVEL SHANK 6 1/4" X 8" COUPLER, NATIONAL FRICTION DRAFT GEAR.
- LIGHTING — 32 VOLT EQUIPMENT SUPPLIED BY TWO (2) LEECE-NEVILLE 50 AMP ALTERNATORS

	DERRICK AXLE LOADS		AT BEAM END		
	D-1	D-2	D-4	D-5	D-6
1	64000	64880	64880	64900	64900
2	64000	64880	64880	64900	64900
3	54000	64880	64880	64900	64900
4	63000	62453	63207	63000	63100
5	63000	62453	63207	63000	63100
6	63000	62453	63207	63000	63100
TOTAL	381,000	381,999	4,261,380	384,000	384,000

ORIGINAL NUMBERS	CLASS	PAGE OWNER
D-1, D-5, D-6	250 TON	SOU.
D-2, D-3	250 TON	C.N.O.S.T.
D-4	250 TON	A.G.S.



RADIUS	CAPACITIES		
	"MAIN HOIST" ALL OUTRIGGERS 250 TONS	END OUTRIGGERS 110 TCNS	WITHOUT OUTRIGGERS 40 TONS
17'-6"			
22'	175 "	80.5 "	27 "
25'	135 "	70 "	23 "
28'	110 "	62.5 "	19 "
30'	95 "	57.5 "	17 "
32'	85 "	55 "	15 "
34'	72.5 "	51 "	13.5 "
36'	62.5 "	46 "	12 "
38'	55 "	41 "	10.5 "

R	SERIAL NO.	NO.	LOCATION
	1243	D-1	KNOXVILLE
	1242	D-2	CHATTA
	1248	D-3	DANVILLE, KY.
	1243	D-4	BIRMINGHAM
	1248	D-5	SPENCER
	1248	D-6	ATLANTA

RADIUS	"AUXILIARY HOIST"		
	60 TONS	60 TONS	26 TONS
25'			
28'	60 "	56.5 "	21.5 "
30'	60 "	54 "	18.75 "
32'	60 "	51.5 "	17.5 "
35'	60 "	48 "	15.5 "
38'	57 "	44 "	13.25 "
40'	55 "	42 "	12.25 "
45'	50 "	34 "	9.75 "
48'	45 "	31 "	8.5 "

TIMKEN ADAPTERS & "AP" BEARINGS
 HE HAND BRAKES.
 ATIONAL FRICTION DRAFT GEAR.
 3 AMP ALTERNATORS

34-F-85

SOUTHERN RAILWAY.
ATLANTA, GA. --MAY 12, 1967
DIAGRAM OF 100TON DERRICK.

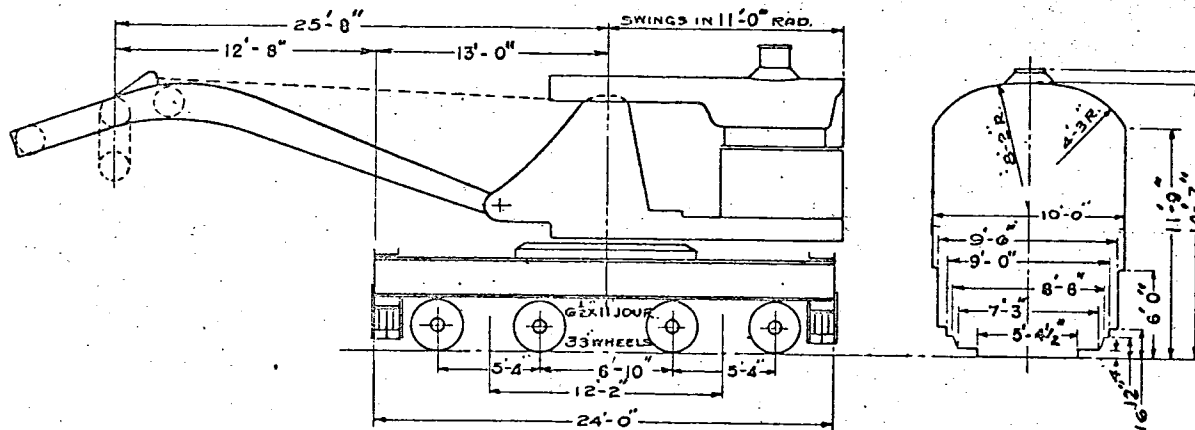
34-F-85

SOUTHERN RAILWAY.
ATLANTA, GA. MAY 12, 1967
DIAGRAM OF 100TON DERRICK

BUILT BY INDUSTRIAL WORKS, 1912.
BUILDERS NUMBER 2563
WEIGHT 192,000 LBS. INCLUDING FUEL, WATER, AND BALLAST
SELF-PROPELLED

NUMBER	CLASS
D-20 (C of G)	100TON

FORMERLY
CG 30206



CAPACITY WITH OUTRIGGERS

MAIN BLOCK	
LOAD	RADIUS
100 TONS	17 FT.
60 "	21 "

CAPACITY WITHOUT OUTRIGGERS

MAIN BLOCK		AUXILIARY BLOCK	
LOAD	RADIUS	LOAD	RADIUS
22 TONS	16 FT.	10 TONS	27 FT.
10.5 TONS	25 FT.	9 TONS	30 FT.

34-F-86

SOUTHERN RAILWAY
 ATLANTA, GA. 12 MAY 1967
 DIAGRAM OF 150 TON DERRICK.

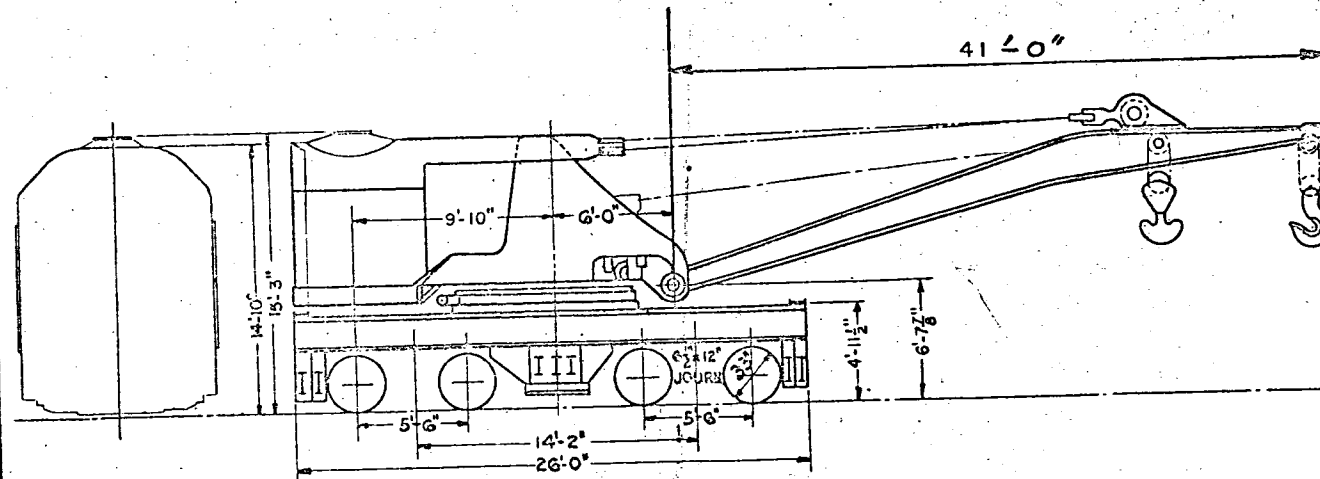
34-F-86

SOUTHERN RAILWAY
 ATLANTA, GA. 12 MAY 1967
 DIAGRAM OF 150 TON DERRICK

BUILT BY INDUSTRIAL WORKS. 1923.
 BUILDERS NUMBER 4401
 WEIGHT 262000 LBS., INCLUDING FUEL, WATER AND BALLAST.
 SELF-PROPELLED

ORIGINAL NUMBERS	CLASS
D-21 (C of G)	150 TON

FORMERLY
 CofG 30207



CAPACITY WITH OUTRIGGERS.			
MAIN BLOCK LOAD	MAIN BLOCK RADIUS	AUXILIARY BLOCK LOAD	AUXILIARY BLOCK RADIUS
150 TONS	17 FT.	30 TONS	23 TO 37 FT.
100 "	21 "		
75 "	25 "		
50 "	30 "		

CAPACITY WITH END OUTRIGGERS ONLY.			
MAIN BLOCK LOAD	MAIN BLOCK RADIUS	AUXILIARY BLOCK LOAD	AUXILIARY BLOCK RADIUS
85 TONS	17 FT.	20 TONS	23 TO 35 FT.
60 "	21 "	26 "	37 FT.
48 "	25 "		
33 "	30 "		

CAPACITY WITHOUT OUTRIGGERS			
MAIN BLOCK LOAD	MAIN BLOCK RADIUS	AUXILIARY BLOCK LOAD	AUXILIARY BLOCK RADIUS
49,800 LBS.	16 FT.	30,000 LBS.	ROPE 21 FT.
33,500 "	21 "	20,300 "	1 " 25 "
25,100 "	25 "	25,100 "	1 " 30 "
18,500 "	30 "	16,700 "	1 " 35 "

34-F-07

SOUTHERN RAILWAY
 ATLANTA, GA. 12 MAY 1967
 DIAGRAM OF 150 TON DERRICK

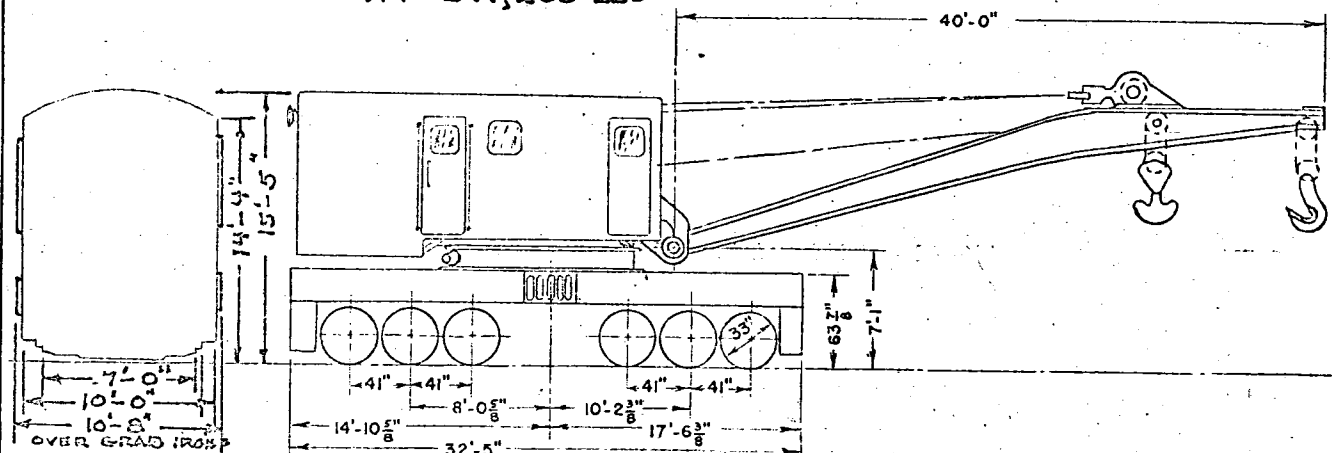
34-F-07

SOUTHERN RAILWAY
 ATLANTA, GA. 12 MAY 1967
 DIAGRAM OF 150 TON DERRICK

NUMBER	CLASS
D-22 (CofG)	150 TON

FORMERLY
 CofG 30208

BUILT BY INDUSTRIAL WORKS, 1926
 BUILDERS NUMBER 4726
 SELF-PROPELLED DIESEL POWERED
 JOURNAL SIZE 6" X 12" ROLLER BR'G
 WHEEL SIZE 33"
 WT- 274,200 LBS



CAPACITY WITH OUTRIGGERS		CAPACITY WITH END OUTRIGGERS ONLY		CAPACITY WITHOUT OUTRIGGERS	
MAIN BLOCK LOAD	AUXILIARY BLOCK LOAD	MAIN BLOCK LOAD	AUXILIARY BLOCK LOAD	MAIN BLOCK LOAD	AUXILIARY BLOCK LOAD
150 TONS	30 TONS	62.5 TONS	30 TONS	49,400 LBS.	34,800 LBS. I LINE
17 FT.	23 TO 37 FT.	17 FT.	23 TO 35 FT.	17 FT.	23 FT.
100 " 21 "		50 " 21 "	26 " 37 FT.	35,500 " 21 "	23,200 " 1 " 30 "
75 " 25 "		42.5 " 25 "		26,600 " 25 "	17,750 " 1 " 35 "
50 " 30 "		32.5 " 30 "		19,000 " 30 "	14,700 " 1 " 38 "

27-F-29

SOUTHERN RAILWAY.
WASHINGTON, D.C. APRIL, 5, 1921.
DIAGRAM OF 100TON DERRICK.

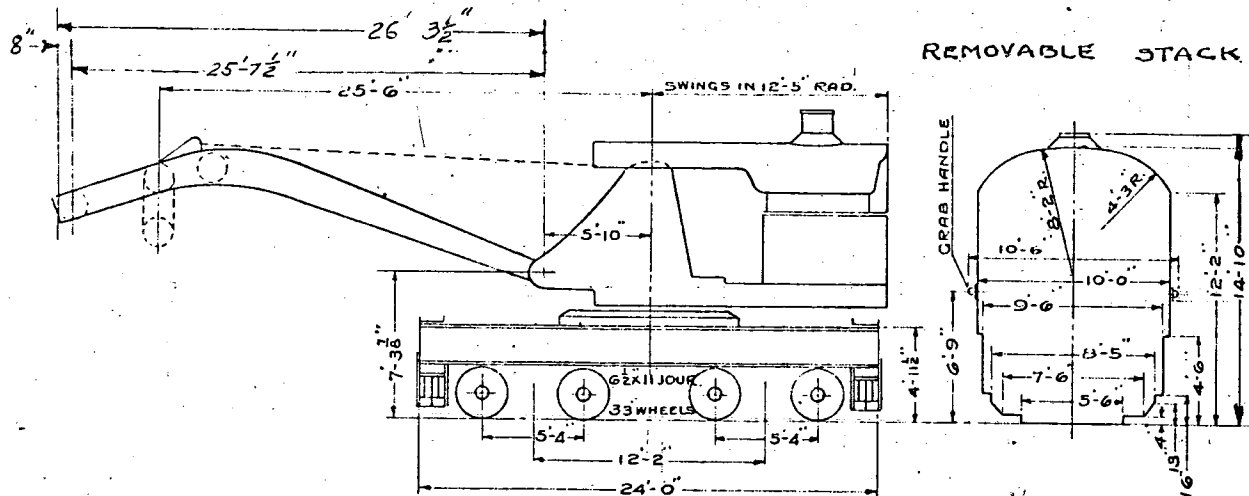
27-F-29

REV. MAY 10, 1960
REV. JUNE 12, 1962

SOUTHERN RAILWAY.
WASHINGTON, D.C. APRIL, 5, 1921.
DIAGRAM OF 100TON DERRICK

BUILT BY INDUSTRIAL WORKS, 1912
BUILDERS NUMBER 2561.
WEIGHT 201,360 LBS. INCLUDING FUEL, WATER AND BALLAST.
WEIGHT 174,600 LBS. " " " " " " " " " " " "

ORIGINAL NUMBER	CLASS
D-36	100TON



CAPACITY WITH OUTRIGGERS

MAIN BLOCK	
LOAD	RADIUS
100 TONS	17 FT.
60 "	21 "

CAPACITY WITHOUT OUTRIGGERS

MAIN BLOCK		AUXILIARY BLOCK	
LOAD	RADIUS	LOAD	RADIUS
22 TONS	16 FT.	10 TONS	27 FT.

27-F-30

SOUTHERN RAILWAY
 WASHINGTON, D.C. JAN., 14, 1921
 DIAGRAM OF 120 TON DERRICK.

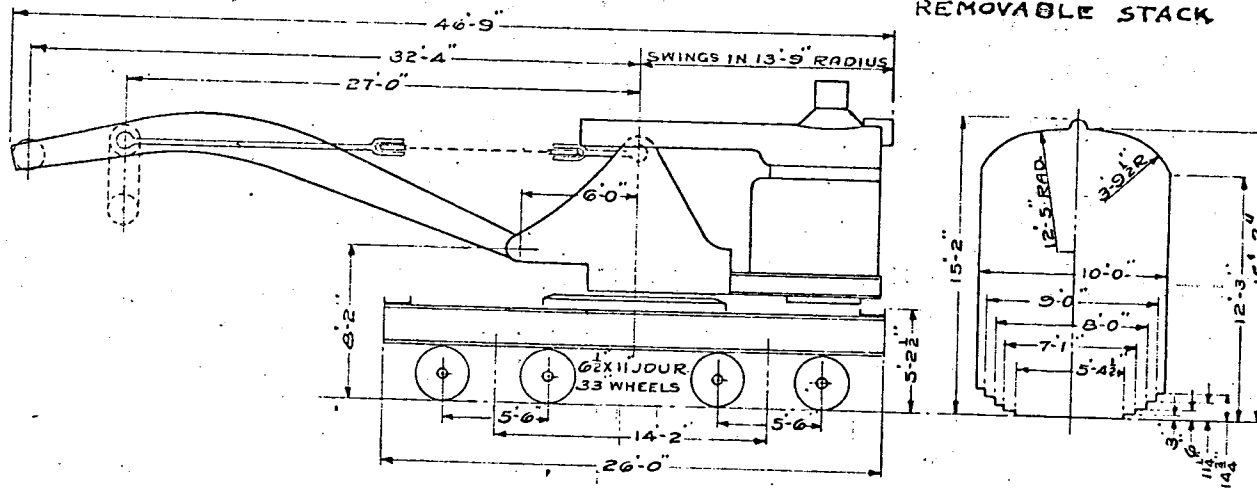
27-F-30

SOUTHERN RAILWAY
 WASHINGTON, D.C. JAN., 14, 1921
 DIAGRAM OF 120 TON DERRICK.

ORIGINAL NUMBER	CLASS
D-37	120 TON

REVISED JULY 14 1925
 " MAY 10 1960

BUILT BY INDUSTRIAL WORKS, 1912.
 BUILDERS NUMBER, 2546
 WEIGHT 23,500 LBS. INCLUDING FUEL, WATER AND BALLAST.



CAPACITY WITH OUTRIGGERS
 MAIN BLOCK AUXILIARY BLOCK
 LOAD RADIUS LOAD RADIUS
 120 TONS 17 FT. 30 TONS 32 FT.
 80 " 20 "

CAPACITY WITH END OUTRIGGERS ONLY.
 MAIN BLOCK AUXILIARY BLOCK
 LOAD RADIUS LOAD RADIUS
 48 TONS 16 FT 21 TONS 32 FT.

CAPACITY AT RIGHT ANGLES, FREE.
 MAIN BLOCK AUXILIARY BLOCK
 LOAD RADIUS LOAD RADIUS
 22 TONS 16-FT. 12 TONS 25 FT
 16 " 20 " 7 " 33 "

27-F-34

SOUTHERN RAILWAY.
WASHINGTON, D. C. JAN., 14, 1921
DIAGRAM OF 120 TON DERRICK

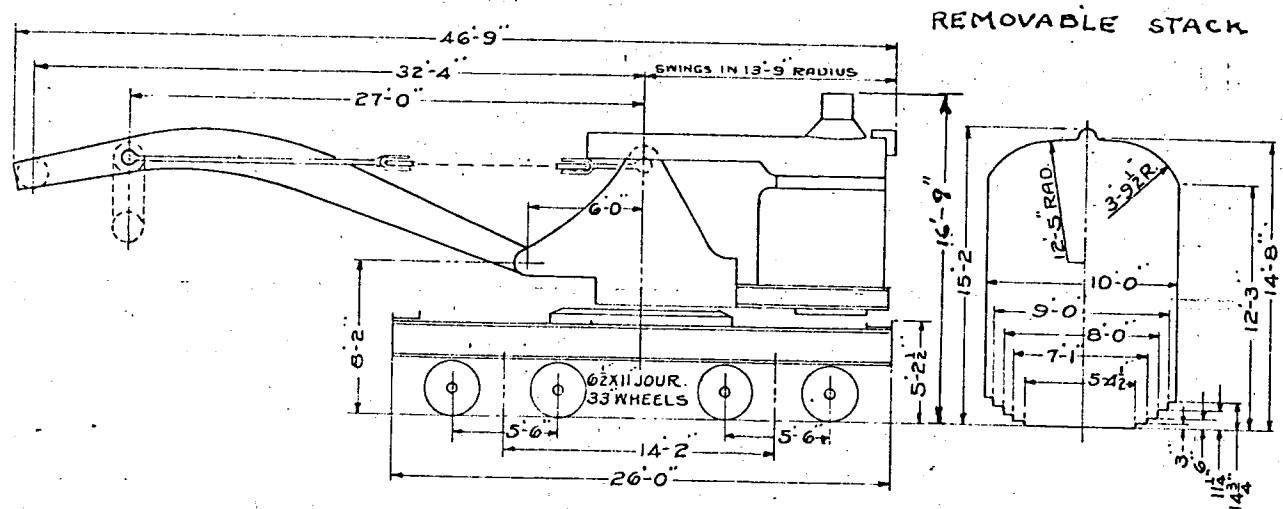
27-F-34

SOUTHERN RAILWAY.
WASHINGTON, D. C. JAN., 14, 1921
DIAGRAM OF 120 TON DERRICK.

ORIGINAL NUMBER	CLASS
D-41	120 TON.

REVISED JULY 14 1925

BUILT BY INDUSTRIAL WORKS, 1913
BUILDERS NUMBER, 2691.
WEIGHT 239600 LBS., INCLUDING FUEL, WATER AND BALLAST



CAPACITY WITH OUTRIGGERS

MAIN BLOCK	AUXILIARY BLOCK
LOAD	LOAD
RADIUS	RADIUS
120 TONS	30 TONS
17 FT.	32 FT.
80 "	20 "

CAPACITY WITH END OUTRIGGERS ONLY

MAIN BLOCK	AUXILIARY BLOCK
LOAD	LOAD
RADIUS	RADIUS
48 TONS	2 TONS
16 FT.	32 FT.

CAPACITY AT RIGHT ANGLES FREE

MAIN BLOCK	AUXILIARY BLOCK
LOAD	LOAD
RADIUS	RADIUS
22 TONS	12 TONS
16 FT.	25 FT.
16 "	7 "
20 "	33 "

27-F-37

SOUTHERN RAILWAY
WASHINGTON, D.C. JAN, 7, 1921
DIAGRAM OF 150 TON DERRICK.

8'-3" - 2 1/2 ft 1/2
9'-3" - 9 1/4
10' - 19"
8'-10" - 5"

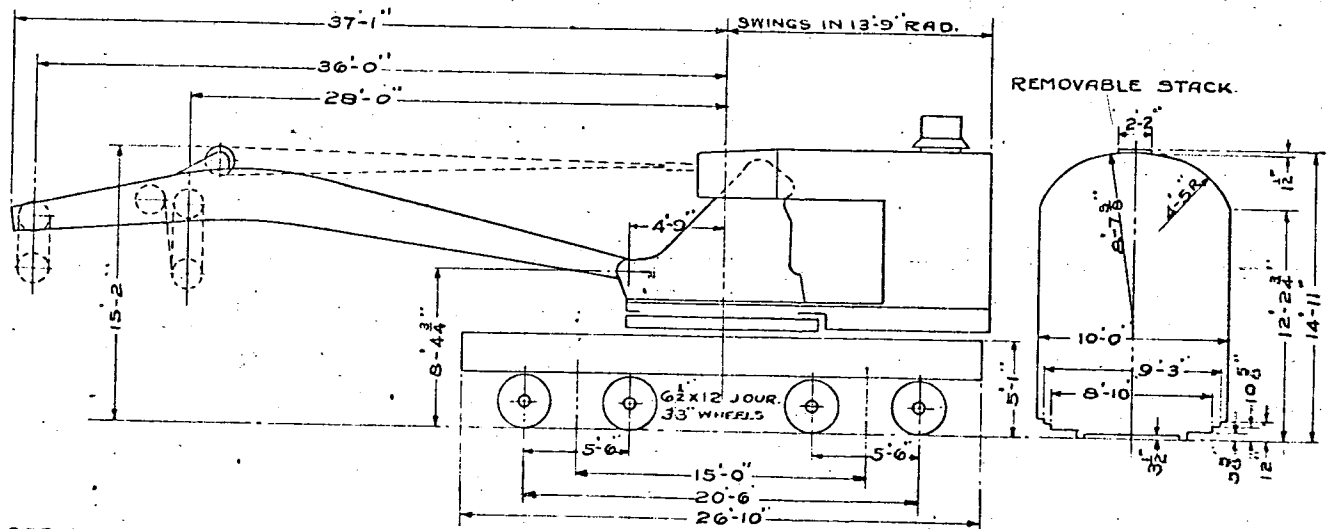
27-F-37

SOUTHERN RAILWAY
WASHINGTON, D.C. JAN, 7, 1921
DIAGRAM OF 150 TON DERRICK.

ORIGINAL NUMBER	CLASS
D-65	150 TON

REV. MAY 12, 1920

BUILT BY BUCYRUS COMPANY, 1919
BUILDERS NUMBER, 250.
WEIGHT 243,000 LBS., INCLUDING FUEL, WATER AND BALLAST.



CAPACITY WITH OUTRIGGERS.

MAIN BLOCK LOAD	RADIUS	AUXILIARY BLOCK LOAD	RADIUS
150 TONS	17 1/2 FT.	45 TONS (2 ROPES)	35 FT.
60 "	27 1/2 FT.		

CAPACITY WITH END OUTRIGGERS ONLY.

MAIN BLOCK LOAD	RADIUS	AUXILIARY BLOCK LOAD	RADIUS
85 TONS	17 FT.	41 TONS (2 PARTS OF ROPE)	35 "
40 "	27 1/2 "	28 "	

CAPACITY WITHOUT OUTRIGGERS.

MAIN BLOCK LOAD	RADIUS	AUXILIARY BLOCK LOAD	RADIUS
24 TONS	17 FT.	17 TONS (SINGLE ROPE)	35 FT.
11 "	27 "	8 1/2 "	

27-F-38

SOUTHERN RAILWAY.
WASHINGTON, D. C. JAN., 7, 1921
DIAGRAM OF 150TON DERRICK.

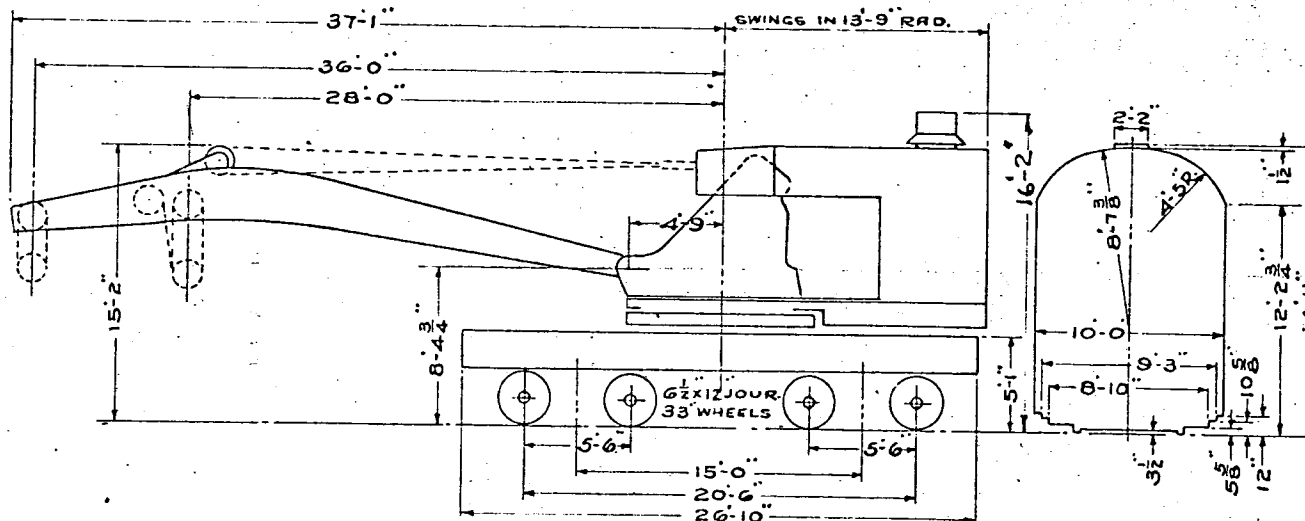
27-F-38

REV. MAY 11, 1960

SOUTHERN RAILWAY.
WASHINGTON, D. C. JAN., 7, 1921
DIAGRAM OF 150TON DERRICK

BUILT BY BUCYRUS COMPANY, 1919
BUILDERS NUMBER, 251
WEIGHT 246,300 LBS., INCLUDING FUEL, WATER AND BALLAST.

ORIGINAL NUMBER	CLASS
D-66	150TON



CAPACITY WITH OUTRIGGERS.		CAPACITY WITH END OUTRIGGERS ONLY.		CAPACITY WITHOUT OUTRIGGERS			
MAIN BLOCK	AUXILIARY BLOCK	MAIN BLOCK	AUXILIARY BLOCK	MAIN BLOCK	AUXILIARY BLOCK	MAIN BLOCK	AUXILIARY BLOCK
LOAD	LOAD	LOAD	LOAD	LOAD	LOAD	LOAD	LOAD
RADIUS	RADIUS	RADIUS	RADIUS	RADIUS	RADIUS	RADIUS	RADIUS
150 TONS	45 TONS (2 ROPES)	95 TONS	41 TONS (2 PARTS OF ROPE)	24 TONS	17 TONS (SINGLE)	17 TONS (SINGLE)	17 TONS (SINGLE)
17 1/2 FT.	35 FT.	17 FT.	27 FT.	17 FT.	17 FT.	23 FT.	35 FT.
60 "	27 1/2 "	40 "	27 "	11 "	27 "	8 1/2 "	35 "

27-F-39

SOUTHERN RAILWAY.
WASHINGTON, D. C. JAN., 7, 1921.
DIAGRAM OF 150 TON DERRICK.

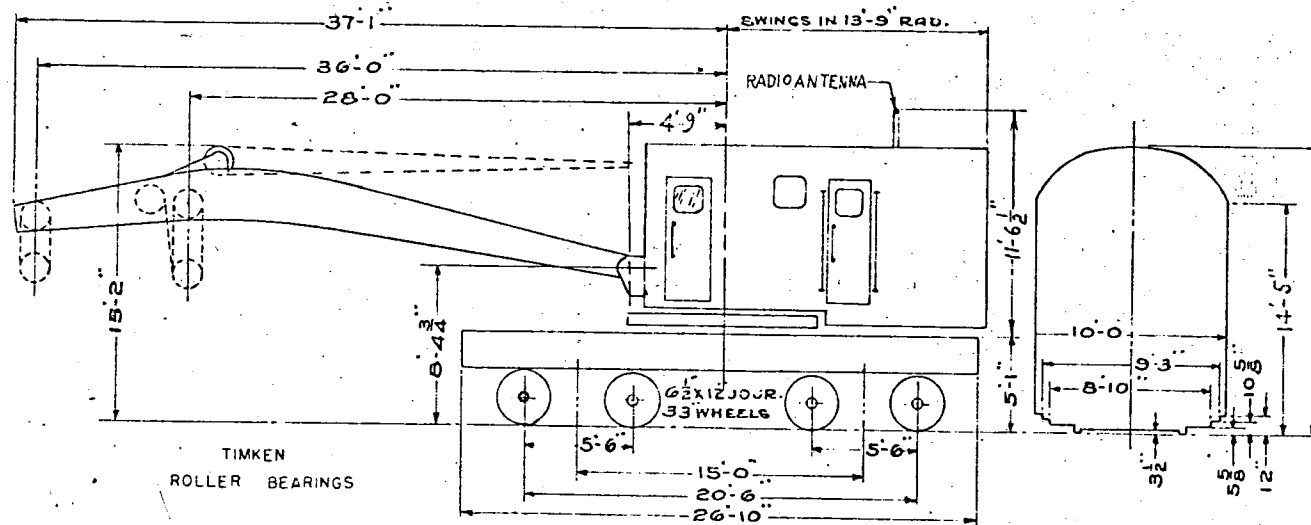
27-F-39

REVISED MAY 12, 1960

SOUTHERN RAILWAY.
WASHINGTON, D. C. JAN., 7, 1921
DIAGRAM OF 150 TON DERRICK

ORIGINAL NUMBER	CLASS
D-67	150 TON

BUILT BY BUCYRUS COMPANY, 1919
BUILDERS NUMBER, 252
WEIGHT 243,200 LBS., INCLUDING FUEL, WATER AND BALLAST.
DIESEL POWERED ROLLER BEARING



CAPACITY WITH OUTRIGGERS.

MAIN BLOCK LOAD	MAIN BLOCK RADIUS	AUXILIARY BLOCK LOAD	AUXILIARY BLOCK RADIUS
150 TONS	17 $\frac{1}{2}$ FT.	45 TONS (2 ROPES)	35 FT.
60 "	27 $\frac{1}{2}$ "		

CAPACITY WITH END OUTRIGGERS ONLY.

MAIN BLOCK LOAD	MAIN BLOCK RADIUS	AUXILIARY BLOCK LOAD	AUXILIARY BLOCK RADIUS
85 TONS	17 FT.	41 TONS (2 PARTS)	27 FT.
40 "	27 "	28 " (OF ROPE)	35 "

CAPACITY WITHOUT OUTRIGGERS.

MAIN BLOCK LOAD	MAIN BLOCK RADIUS	AUXILIARY BLOCK LOAD	AUXILIARY BLOCK RADIUS
24 TONS	17 FT.	17 TONS (SINGLE)	23 FT.
11 "	27 "	8 $\frac{1}{2}$ " (ROPE)	35 "

27-F-40

SOUTHERN RAILWAY.
WASHINGTON, D.C. JAN., 7, 1921.
DIAGRAM OF 150 TON DERRICK.

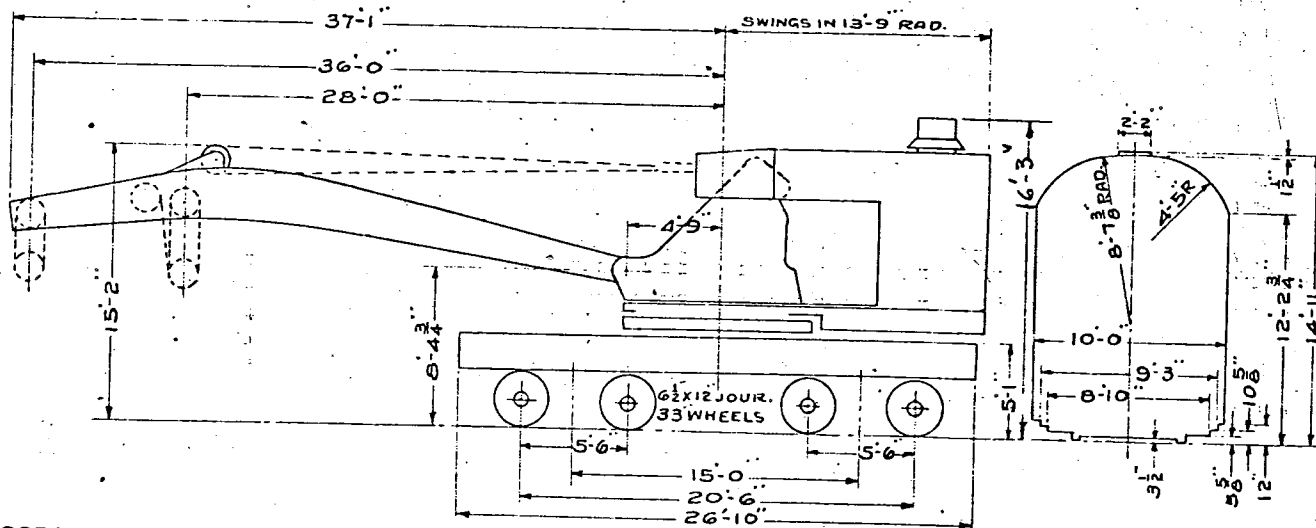
27-F-40

REVISED MAY 10, 1960

SOUTHERN RAILWAY.
WASHINGTON, D.C. JAN., 7, 1921
DIAGRAM OF 150 TON DERRICK

ORIGINAL NUMBER	CLASS
D-68	150TON

BUILT BY BUCYRUS COMPANY, 1919
BUILDERS NUMBER, 253.
WEIGHT 241,000 LBS., INCLUDING FUEL, WATER AND BALLAST.



CAPACITY WITH OUTRIGGERS.
MAIN BLOCK LOAD 150 TONS 17 1/2 FT. RADIUS 60 " 27 1/2 "
AUXILIARY BLOCK LOAD 45 TONS (2 ROPES) 35 FT. RADIUS

CAPACITY WITH END OUTRIGGERS ONLY.
MAIN BLOCK LOAD 85 TONS 17 FT. RADIUS 40 " 27 "
AUXILIARY BLOCK LOAD 41 TONS (2 PARTS OF ROPE) 27 FT. RADIUS 28 " 35 "

CAPACITY WITHOUT OUTRIGGERS
MAIN BLOCK LOAD 24 TONS 17 FT. RADIUS 11 " 27 "
AUXILIARY BLOCK LOAD 17 TONS (SINGLE ROPE) 23 FT. RADIUS 8 1/2 " 35 "

27-F-41

SOUTHERN RAILWAY.
WASHINGTON, D.C. JAN., 7, 1921.
DIAGRAM OF 150 TON DERRICK.

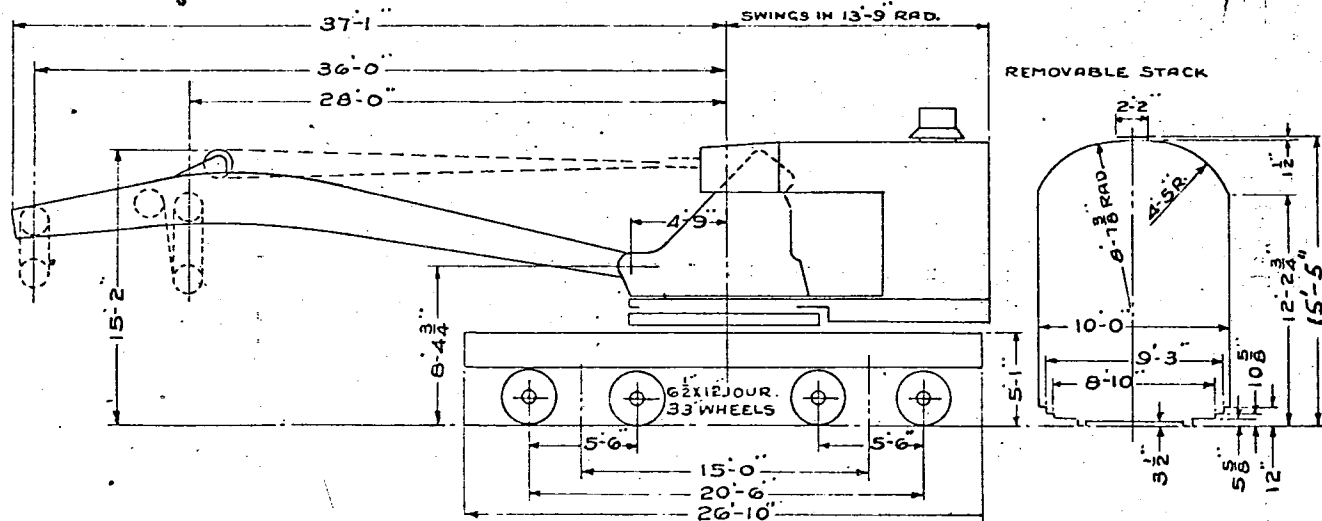
27-F-41

REVISED MAY 15, 1925

SOUTHERN RAILWAY.
WASHINGTON, D.C. JAN. 7, 1921.
DIAGRAM OF 150 TON DERRICK

BUILT BY BUCYRUS COMPANY, 1919
BUILDERS NUMBER, 256.
WEIGHT 237,800 LBS., INCLUDING FUEL, WATER AND BALLAST.

ORIGINAL NUMBER	CLASS
D-69	150TON



CAPACITY WITH OUTRIGGERS		CAPACITY WITH END OUTRIGGERS ONLY		CAPACITY WITHOUT OUTRIGGERS	
MAIN BLOCK	AUXILIARY BLOCK	MAIN BLOCK	AUXILIARY BLOCK	MAIN BLOCK	AUXILIARY BLOCK
LOAD	RADIUS	LOAD	RADIUS	LOAD	RADIUS
150 TONS	17 1/2 FT.	85 TONS	17 FT.	24 TONS	17 FT.
60 "	27 1/2 "	40 "	27 "	11 "	27 "
					8 1/2 " { ROPE } 35 "
					17 TONS (SINGLE) 23 FT.
					21 TONS { 2 PARTS } 27 FT.
					28 " { OF ROPE } 35 "

28-F-58

SOUTHERN RAILWAY
 WASHINGTON D.C., SEPT.-1-1926.
 DIAGRAM OF 150 TON DERRICK.

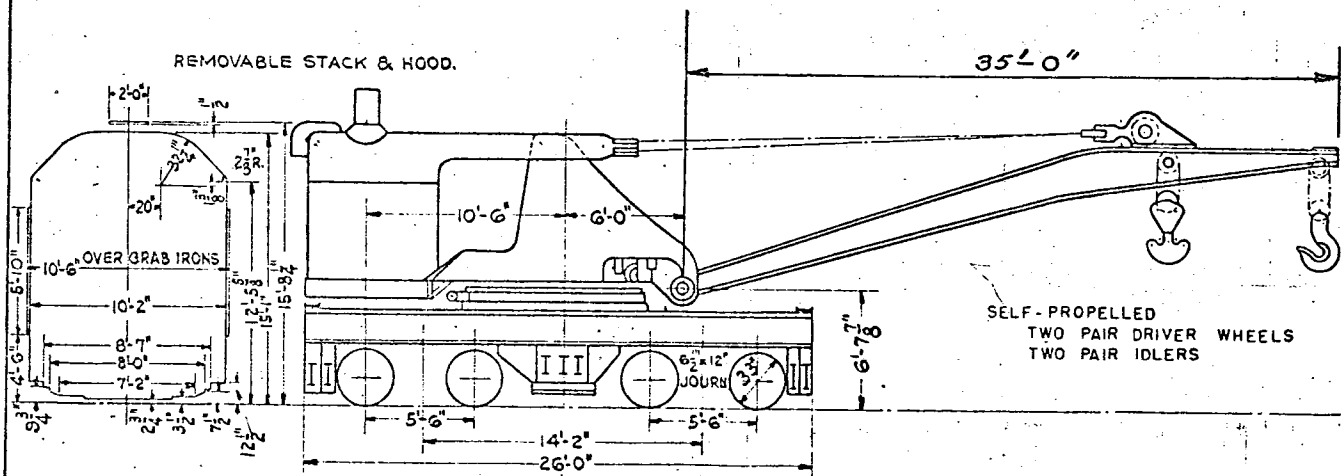
28-F-58

SOUTHERN RAILWAY.
 WASHINGTON D.C., SEPT.-1-1926.
 DIAGRAM OF 150 TON DERRICK.

ORIGINAL NUMBERS	CLASS
D-70	150 TON

REVISED MAY 12, 1960

BUILT BY INDUSTRIAL WORKS, 1926.
 BUILDERS NUMBER 4728.
 WEIGHT 265,245 LBS., INCLUDING FUEL, WATER AND BALLAST.



CAPACITY WITH OUTRIGGERS.			
MAIN BLOCK LOAD	AUXILIARY BLOCK LOAD	MAIN BLOCK RADIUS	AUXILIARY BLOCK RADIUS
150 TONS	30 TONS	17 FT.	23 TO 37 FT.
100 "		21 "	
75 "		25 "	
50 "		30 "	

CAPACITY WITH END OUTRIGGERS ONLY.			
MAIN BLOCK LOAD	AUXILIARY BLOCK LOAD	MAIN BLOCK RADIUS	AUXILIARY BLOCK RADIUS
85 TONS	30 TONS	17 FT.	23 TO 35 FT.
60 "	26 "	21 "	37 FT.
48 "		25 "	
35 "		30 "	

CAPACITY WITHOUT OUTRIGGERS			
MAIN BLOCK LOAD	AUXILIARY BLOCK LOAD	MAIN BLOCK RADIUS	AUXILIARY BLOCK RADIUS
49,400 LBS.	34,800 LBS.	17 FT.	20 FT.
35,400 "	23,200 "	21 "	30 "
26,600 "	17,750 "	25 "	35 "
19,000 "	14,700 "	30 "	38 "

28-F-65

SOUTHERN RAILWAY
 WASHINGTON D.C., SEPT. 1-1926.
 DIAGRAM OF 150 TON DERRICK

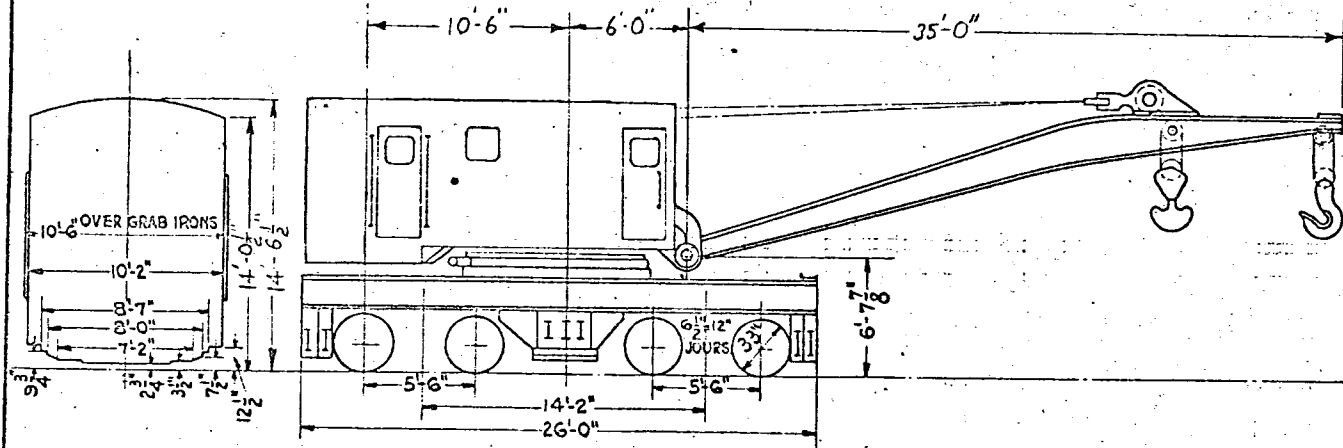
28-F-65

REV. MAY 15, 1960

SOUTHERN RAILWAY
 WASHINGTON D.C., SEPT. 1-1926.
 DIAGRAM OF 150 TON DERRICK

ORIGINAL NUMBERS	CLASS
D-72	150 TON

BUILT BY INDUSTRIAL WORKS. 1926.
 BUILDERS NUMBER 4730.
 WEIGHT 264,680 LBS., INCLUDING FUEL, WATER AND BALLAST.
 DIESEL POWERED-SELF PROPELLED
 ROLLER BEARING



CAPACITY WITH OUTRIGGERS.				CAPACITY WITH END OUTRIGGERS ONLY.				CAPACITY WITHOUT OUTRIGGERS			
MAIN BLOCK		AUXILIARY BLOCK		MAIN BLOCK		AUXILIARY BLOCK		MAIN BLOCK		AUXILIARY BLOCK	
LOAD	RADIUS	LOAD	RADIUS	LOAD	RADIUS	LOAD	RADIUS	LOAD	RADIUS	LOAD	RADIUS
150 TONS	17 FT.	30 TONS	23 TO 37 FT.	85 TONS	17 FT.	30 TONS	23 TO 35 FT.	49,400 LBS.	17 FT.	34,800 LBS.	2 ROPES 23 FT.
100 "	21 "			60 "	21 "	26 "	37 FT.	35,400 "	21 "	23,200 "	" 30 "
75 "	25 "			48 "	25 "			26,600 "	25 "	17,750 "	" 35 "
50 "	30 "			35 "	30 "			19,000 "	30 "	14,700 "	" 38 "

28-F-67

SOUTHERN RAILWAY
 WASHINGTON D.C., SEPT.-1-1926.
 DIAGRAM OF 150 TON DERRICK.

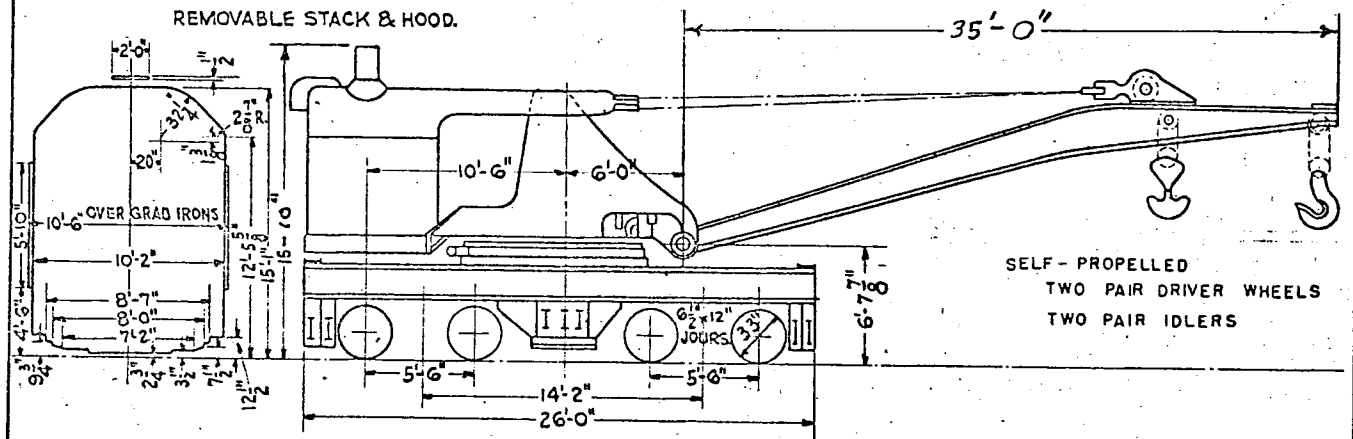
28-F-67

SOUTHERN RAILWAY
 WASHINGTON D.C., SEPT.-1-1926.
 DIAGRAM OF 150 TON DERRICK

ORIGINAL NUMBERS	CLASS
D-74	150 TON

REVISED MAY 18, 1960

BUILT BY INDUSTRIAL WORKS, 1926.
 BUILDERS NUMBER 4732.
 WEIGHT 258,900 LBS., INCLUDING FUEL, WATER AND BALLAST.



SELF-PROPELLED
 TWO PAIR DRIVER WHEELS
 TWO PAIR IDLERS

CAPACITY WITH OUTRIGGERS		CAPACITY WITH END OUTRIGGERS ONLY.		CAPACITY WITHOUT OUTRIGGERS	
MAIN BLOCK LOAD	AUXILIARY BLOCK LOAD	MAIN BLOCK LOAD	AUXILIARY BLOCK LOAD	MAIN BLOCK LOAD	AUXILIARY BLOCK LOAD
150 TONS	30 TONS	85 TONS	30 TONS	49,400 LBS.	34,800 LBS. 2 ROPES
RADIUS	RADIUS	RADIUS	RADIUS	RADIUS	RADIUS
17 FT.	23 TO 37 FT.	17 FT.	23 TO 35 FT.	17 FT.	23 FT.
100 "	25 "	60 "	26 "	35,400 "	23,200 "
75 "	21 "	48 "	21 "	26,600 "	17,750 "
50 "	30 "	35 "	30 "	19,000 "	14,700 "
					38 "

28-F-68

SOUTHERN RAILWAY
 WASHINGTON D.C., SEPT.-1-1926.
 DIAGRAM OF 150 TON DERRICK.

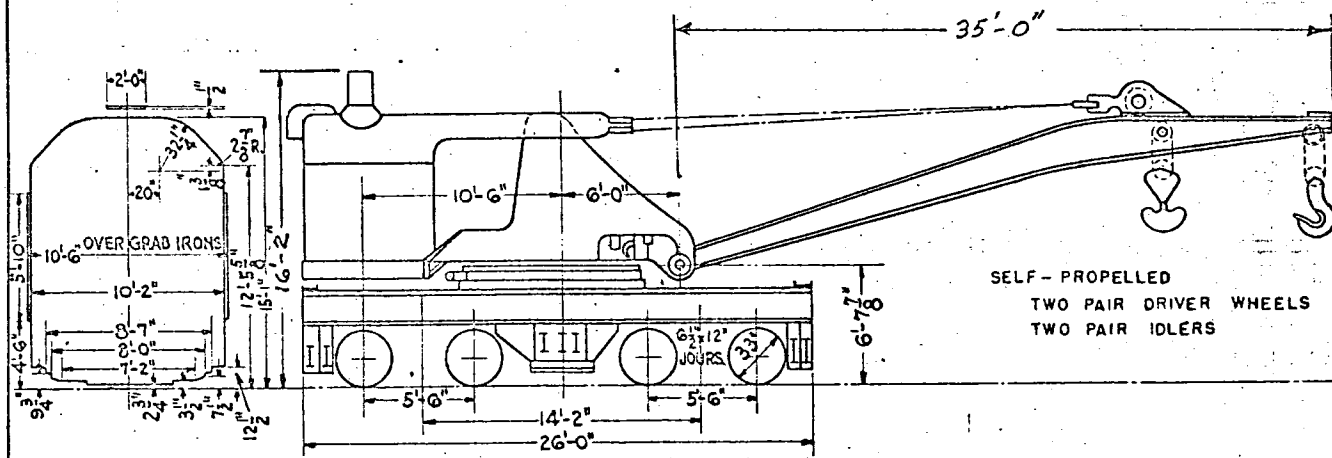
28-F-68

REV. MAY 10, 1960

SOUTHERN RAILWAY
 WASHINGTON D.C., SEPT.-1-1926.
 DIAGRAM OF 150 TON DERRICK

BUILT BY INDUSTRIAL WORKS. 1926.
 BUILDERS NUMBER 4724.
 WEIGHT 266,000 LBS., INCLUDING FUEL, WATER AND BALLAST.

ORIGINAL NUMBERS	CLASS
D-5988	150 TON



CAPACITY WITH OUTRIGGERS.				CAPACITY WITH END OUTRIGGERS ONLY.				CAPACITY WITHOUT OUTRIGGERS			
MAIN BLOCK LOAD	AUXILIARY BLOCK LOAD	MAIN BLOCK RADIUS	AUXILIARY BLOCK RADIUS	MAIN BLOCK LOAD	AUXILIARY BLOCK LOAD	MAIN BLOCK RADIUS	AUXILIARY BLOCK RADIUS	MAIN BLOCK LOAD	AUXILIARY BLOCK LOAD	MAIN BLOCK RADIUS	AUXILIARY BLOCK RADIUS
150 TONS	30 TONS	17 FT.	23 TO 37 FT.	85 TONS	30 TONS	17 FT.	23 TO 35 FT.	49,400 LBS.	34,800 LBS.	17 FT.	23 TO 37 FT.
100 "	25 "	21 "		60 "	26 "	21 "	37 FT.	35,400 "	23,200 "	21 "	30 "
75 "	20 "	25 "		48 "	21 "	25 "		26,600 "	17,750 "	25 "	35 "
50 "	15 "	30 "		35 "	16 "	30 "		19,000 "	14,700 "	30 "	38 "

JP

28-F-69

SOUTHERN RAILWAY
 WASHINGTON D.C., SEPT.-1-1926.
 DIAGRAM OF 150 TON DERRICK.

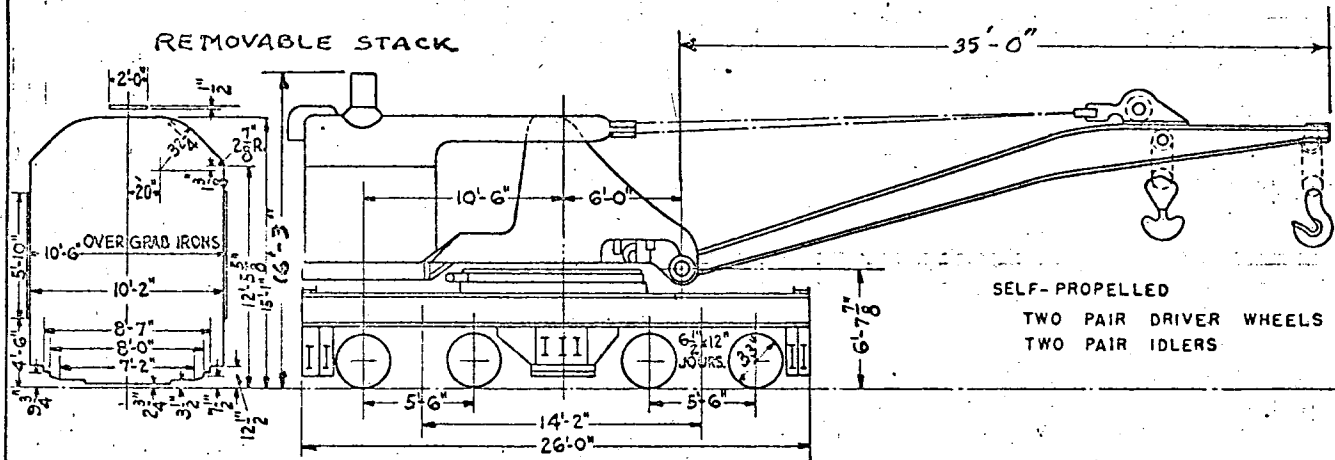
28-F-69

REVISED MAY 10, 1960

SOUTHERN RAILWAY
 WASHINGTON D.C., SEPT.-1-1926.
 DIAGRAM OF 150 TON DERRICK

BUILT BY INDUSTRIAL WORKS, 1926.
 BUILDERS NUMBER 4725
 WEIGHT 269,000 LBS., INCLUDING FUEL, WATER AND BALLAST.

ORIGINAL NUMBERS	CLASS
D-5989	150 TON



CAPACITY WITH OUTRIGGERS		CAPACITY WITH END OUTRIGGERS ONLY.		CAPACITY WITHOUT OUTRIGGERS	
MAIN BLOCK LOAD	AUXILIARY BLOCK LOAD	MAIN BLOCK LOAD	AUXILIARY BLOCK LOAD	MAIN BLOCK LOAD	AUXILIARY BLOCK LOAD
RADIUS	RADIUS	RADIUS	RADIUS	RADIUS	RADIUS
150 TONS	30 TONS	85 TONS	30 TONS	49,400 LBS.	34,800 LBS. 2 ROPES
17 FT.	23 TO 37 FT.	17 FT.	23 TO 35 FT.	17 FT.	23 FT.
100 "		60 "	26 "	35,400 "	23,200 "
75 "		48 "	26 "	26,600 "	17,750 "
50 "		35 "	30 "	19,000 "	14,700 "
21 "		21 "		21 "	1 "
25 "		25 "		25 "	1 "
30 "		30 "		30 "	1 "

27-F-43

SOUTHERN RAILWAY
 WASHINGTON, D. C. JAN., 14, 1921.
 DIAGRAM OF 120TON DERRICK.

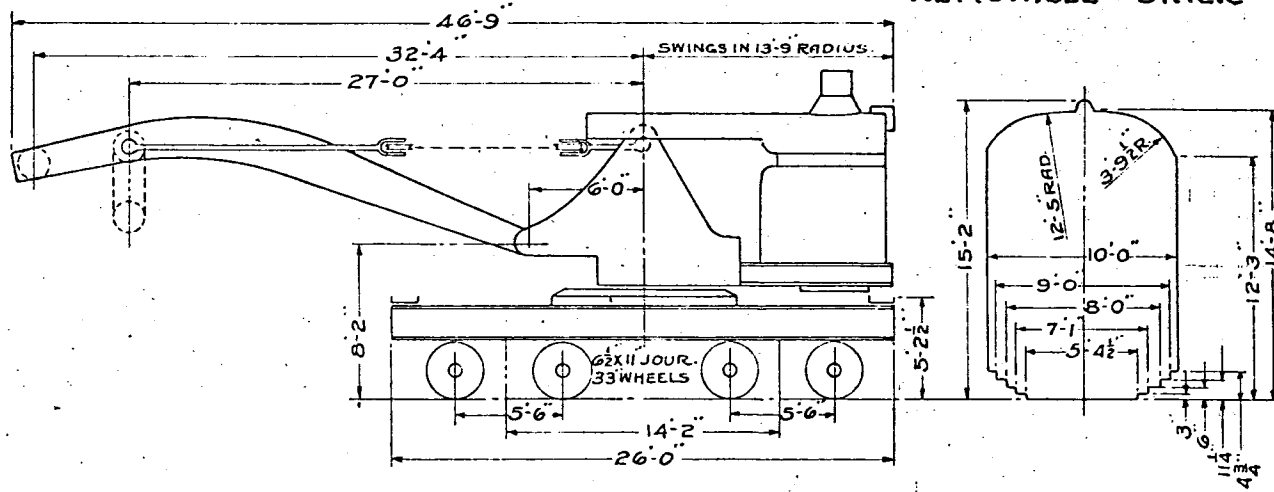
27-F-43

REVISED JULY 14, 1925
 REVISED MAY 18, 1960

SOUTHERN RAILWAY
 WASHINGTON, D. C. JAN., 14, 1921.
 DIAGRAM OF 120TON DERRICK.

BUILT BY INDUSTRIAL WORKS, 1913
 BUILDERS NUMBER, 2783.
 WEIGHT 247,700 LBS., INCLUDING FUEL, WATER AND BALLAST.

ORIGINAL NUMBER	CLASS
D-5991	120TON.



CAPACITY WITH OUTRIGGERS
 MAIN BLOCK LOAD RADIUS 120 TONS 17 FT.
 AUXILIARY BLOCK LOAD RADIUS 30 TONS 32 FT.
 80 " 20 "

CAPACITY WITH END OUTRIGGERS ONLY
 MAIN BLOCK LOAD RADIUS 48 TONS 16 FT.
 AUXILIARY BLOCK LOAD RADIUS 21 TONS 32 FT.

CAPACITY AT RIGHT ANGLES, FREE
 MAIN BLOCK LOAD RADIUS 22 TONS 16 FT.
 AUXILIARY BLOCK LOAD RADIUS 12 TONS 25 FT.
 16 " 20 " 7 " 33 "

27-F-47

SOUTHERN RAILWAY.
 WASHINGTON, D.C. MARCH, 10, 1921.
 DIAGRAM OF 100TON DERRICK.

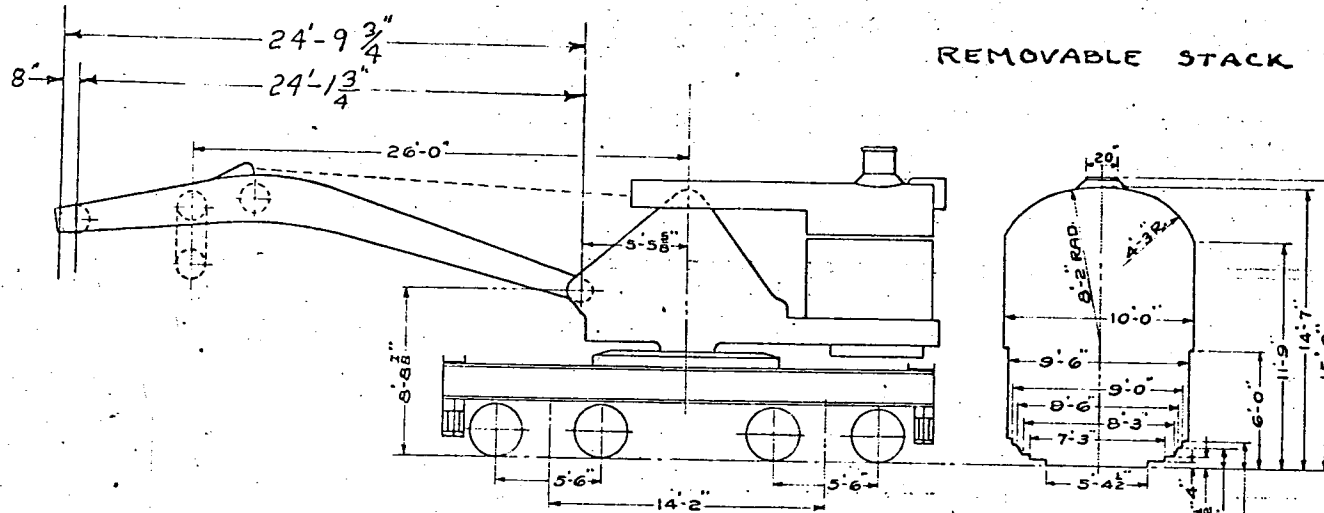
27-F-47

SOUTHERN RAILWAY.
 WASHINGTON, D.C. MARCH, 10, 1921.
 DIAGRAM OF 100TON DERRICK.

ORIGINAL NUMBER	CLASS
D-6470	100TON

REVISED MAY 18, 1955
 REVISED JUNE 12, 1962

BUILT BY INDUSTRIAL WORKS, 1907
 BUILDERS NUMBER, 1350
 WEIGHT 227,780LBS INCLUDING FUEL, WATER AND BALLAST
 WEIGHT 229,300LBS " " " " " "



CAPACITY WITH OUTRIGGERS
 LOAD 100 TONS
 80 "
 RADIUS 17 FT
 20 "

CAPACITY WITHOUT OUTRIGGERS
 LOAD 23 TONS
 18 "
 RADIUS 16 FT
 20 "

28-F-70

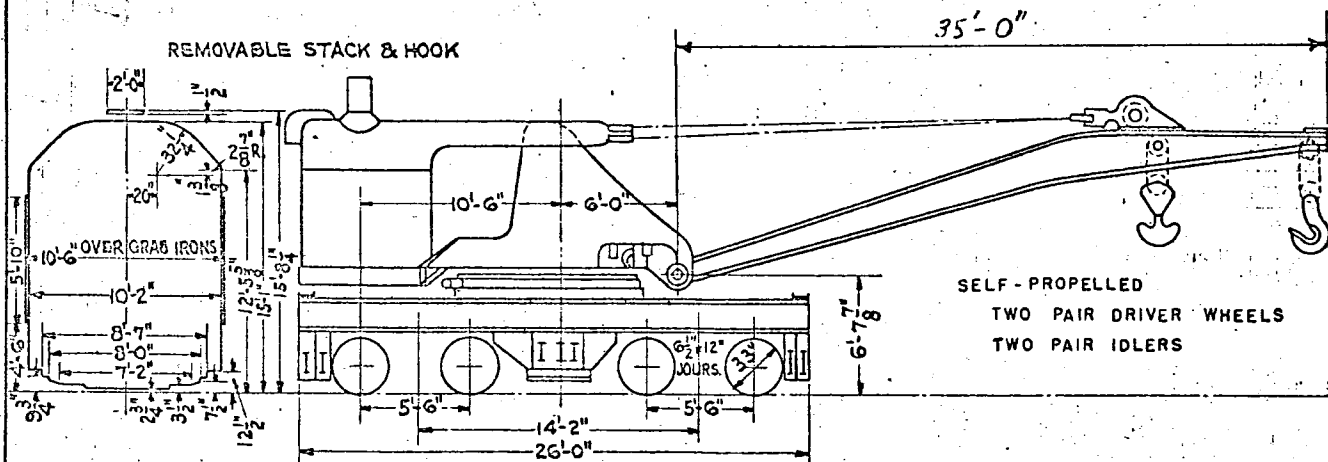
SOUTHERN RAILWAY
WASHINGTON D.C., SEPT.-1-1926.
DIAGRAM OF 150 TON DERRICK.

28-F-70

SOUTHERN RAILWAY
WASHINGTON D.C., SEPT.-1-1926.
DIAGRAM OF 150 TON DERRICK.

ORIGINAL NUMBERS	CLASS
D-6471	150 TON

BUILT BY INDUSTRIAL WORKS, 1926.
BUILDERS NUMBER 4727.
WEIGHT 264500 LBS., INCLUDING FUEL, WATER AND BALLAST.



CAPACITY WITH OUTRIGGERS		CAPACITY WITH END OUTRIGGERS ONLY.		CAPACITY WITHOUT OUTRIGGERS	
MAIN BLOCK LOAD	AUXILIARY BLOCK LOAD	MAIN BLOCK LOAD	AUXILIARY BLOCK LOAD	MAIN BLOCK LOAD	AUXILIARY BLOCK LOAD
RADIUS	RADIUS	RADIUS	RADIUS	RADIUS	RADIUS
150 TONS	30 TONS	85 TONS	30 TONS	49,400 LBS.	34,000 LBS. 2 ROPES
17 FT.	23 TO 37 FT.	17 FT.	23 TO 35 FT.	17 FT.	23 FT.
21 "		21 "	37 FT.	21 "	30 "
25 "		25 "		25 "	35 "
30 "		30 "		30 "	38 "

34-F-08

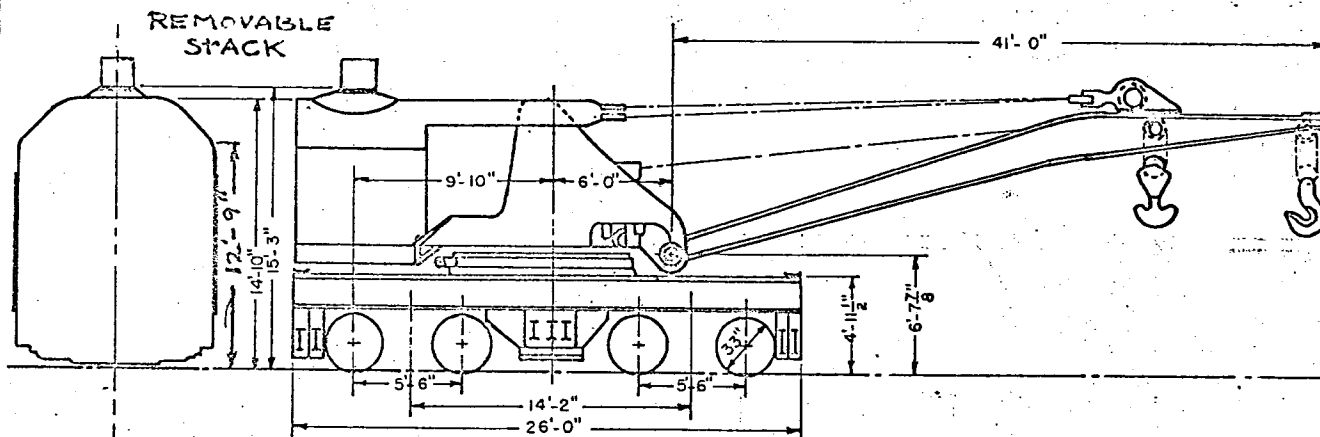
SOUTHERN RAILWAY
 ATLANTA, GA. 12 MAY 1967
 DIAGRAM OF 150 TON DERRICK

34-F-08

SOUTHERN RAILWAY
 ATLANTA, GA. 12 MAY 1967
 DIAGRAM OF 150 TON DERRICK

ORIGINAL NUMBERS	CLASS
W-50 (INT)	150 TON

BUILT BY INDUSTRIAL WORKS, 1923
 BUILDERS NUMBER 4403
 WEIGHT 255,600 LBS., INCLUDING FUEL, WATER AND BALLAST



CAPACITY WITH OUTRIGGERS			
MAIN BLOCK LOAD	MAIN BLOCK RADIUS	AUXILIARY BLOCK LOAD	AUXILIARY BLOCK RADIUS
150 TONS	17 FT.	30 TONS	23 TO 37 FT.
100 "	21 "		
75 "	25 "		
50 "	30 "		

CAPACITY WITH END OUTRIGGERS ONLY			
MAIN BLOCK LOAD	MAIN BLOCK RADIUS	AUXILIARY BLOCK LOAD	AUXILIARY BLOCK RADIUS
85 TONS	17 FT.	30 TONS	23 TO 35 FT.
60 "	21 "	26 "	37 FT.
48 "	25 "		
35 "	30 "		

CAPACITY WITHOUT OUTRIGGERS			
MAIN BLOCK LOAD	MAIN BLOCK RADIUS	AUXILIARY BLOCK LOAD	AUXILIARY BLOCK RADIUS
49,800 LBS.	16 FT.	30,000 LBS. 1 ROPE	21 FT.
33,500 "	21 "	28,300 "	1 " 25 "
25,100 "	25 "	25,100 "	1 " 30 "
18,500 "	30 "	16,700 "	1 " 35 "

34-F-88

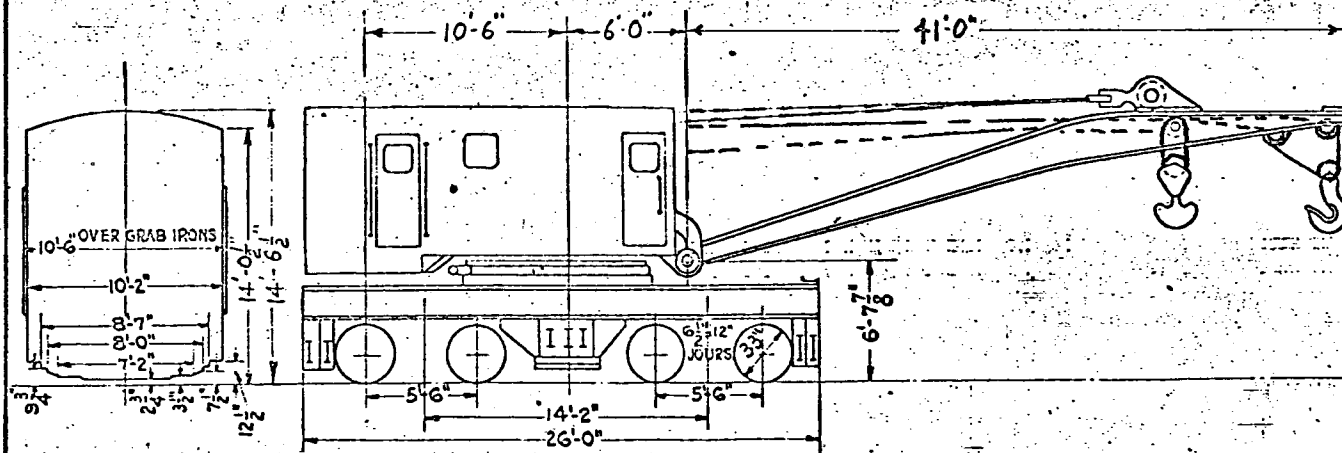
SOUTHERN RAILWAY
 WASHINGTON D.C. 12 MAY 1967
 DIAGRAM OF 150 TON DERRICK

34-F-88

SOUTHERN RAILWAY
 WASHINGTON D.C. 12 MAY 1967
 DIAGRAM OF 150 TON DERRICK

ORIGINAL NUMBERS	CLASS
W-50 (INT)	150 TON

BUILT BY INDUSTRIAL WORKS. 1923
 BUILDERS NUMBER 4403
 WEIGHT 256,100 LBS., INCLUDING FUEL, WATER AND BALLAST.
 DIESEL POWERED
 ROLLER BEARING



CAPACITY WITH OUTRIGGERS:				CAPACITY WITH END OUTRIGGERS ONLY:				CAPACITY WITHOUT OUTRIGGERS			
MAIN BLOCK LOAD	AUXILIARY BLOCK LOAD	MAIN BLOCK RADIUS	AUXILIARY BLOCK RADIUS	MAIN BLOCK LOAD	AUXILIARY BLOCK LOAD	MAIN BLOCK RADIUS	AUXILIARY BLOCK RADIUS	MAIN BLOCK LOAD	AUXILIARY BLOCK LOAD	MAIN BLOCK RADIUS	AUXILIARY BLOCK RADIUS
150 TONS	30 TONS	17 FT.	23 TO 37 FT.	85 TONS	30 TONS	17 FT.	23 TO 35 FT.	49,800 LBS.	34,800 LBS.	17 FT.	23 TO 23 FT.
100 " 21 "				60 " 21 "	26 "		37 FT.	35,400 "	23,200 "	21 "	30 "
75 " 25 "				48 " 25 "				26,600 "	17,750 "	25 "	35 "
50 " 30 "				35 " 30 "				19,000 "	14,700 "	30 "	38 "

JP

SOUTHERN RAILWAY

DERRICK DIAGRAMS

1967

THIS DOCUMENT PROVIDED BY ALLEN STANLEY,
RAILROAD DATA EXCHANGE

POSTED BY: DONNIE DIXON
February 13, 2010

