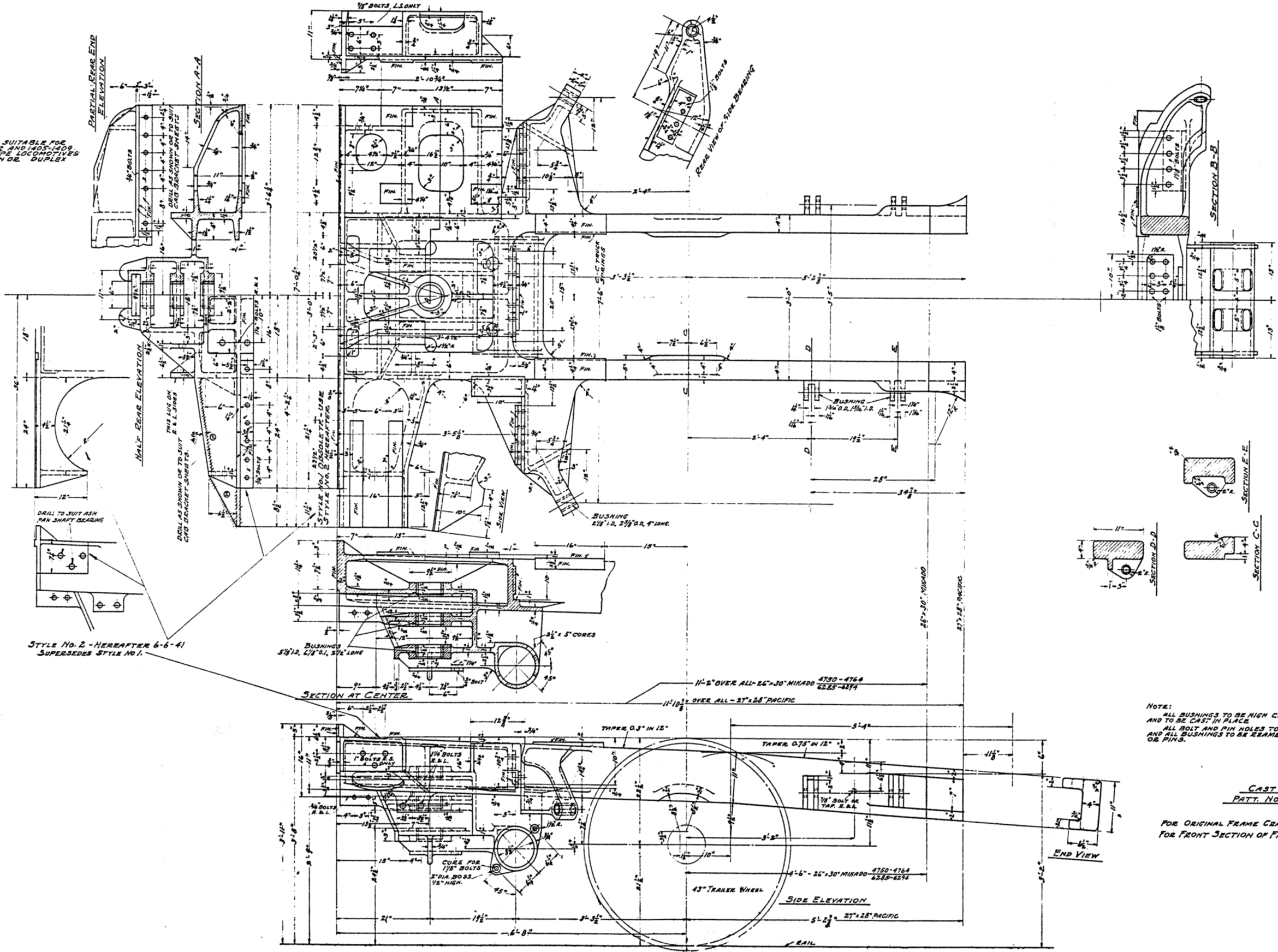


PS 4 FRAME CRADLE - BACK SECTION

NOTE:  
THIS BACK SECTION IS ALSO SUITABLE FOR  
APPLICATION TO THE 1384-1392 AND 1405-1409  
CLASSES OF 27" x 28" PACIFIC TYPE LOCOMOTIVES  
WHEN NOT EQUIPPED WITH ELVIN OR DUPLEX  
STONES.



STYLE No. 2 - HEREAFTER 6-6-41  
SUPERSEDES STYLE NO. 1.

NOTE:  
ALL BUSHINGS TO BE HIGH CARBON STEEL  
AND TO BE CAST IN PLACE.  
ALL BOLT AND PIN HOLES TO BE DRILLED  
AND ALL BUSHINGS TO BE REAMED TO FIT BOLTS  
OR PINS.

CAST STEEL  
PATT. NO. ES-2276

FOR ORIGINAL FRAME CRADLE SEE DRAWING SL-5088, SL-5063  
FOR FRONT SECTION OF FRAME CRADLE SEE DRAWING SL-2466