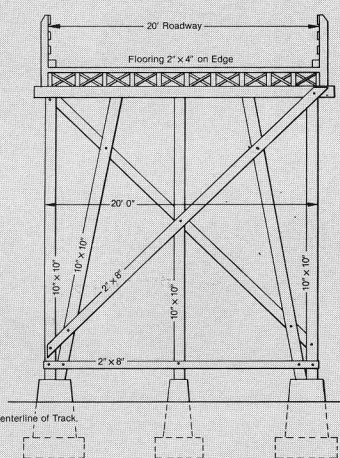
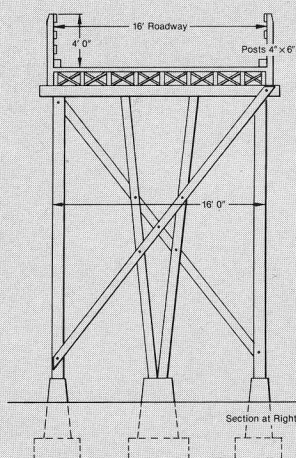
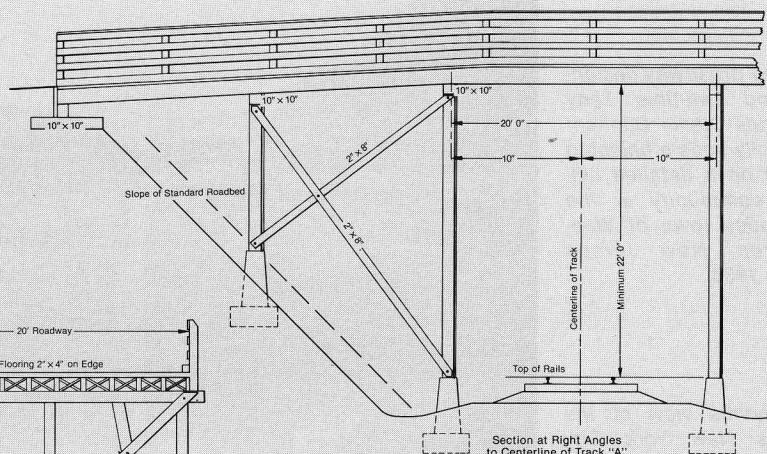
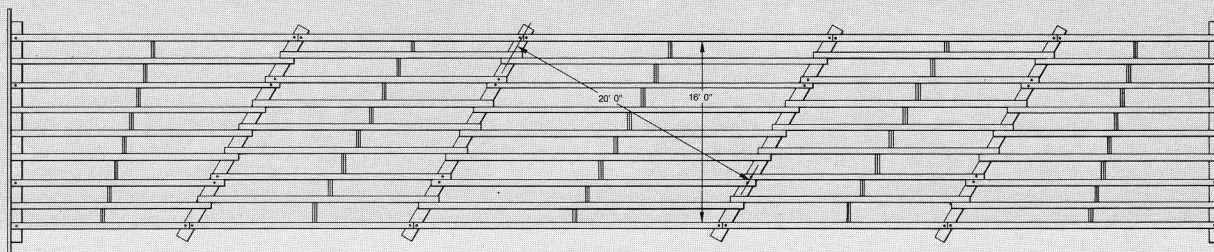


# Standard Plans

## Southern Railway WOODEN HIGHWAY BRIDGE



Prepared from official Southern Railway Standards drawings. Copies of these drawings may be made for noncommercial use only.

1/2 HO Size

### — NOTES —

On approach fills higher than 10' 0" fence must be carried back on both sides a sufficient distance properly to guard the roadway.

Where practicable, centerline of crossing must be laid out at right angles to centerline of track.

All timber creosoted except fencing which will be prime yellow pine.

All sawn ends or sized surfaces of bridge timbers must be thoroughly treated with hot creosote oil.

Piers to be built of 1:3:6 Portland Cement concrete with footings on firm foundations and tops not less

than one foot above surface of ground. If slope is too soft or unstable to support concrete piers at location "A," creosoted blocking may be substituted.

All level portions of bridge to have scupper holes for drainage.

Side of cut must be dressed back on a slope of one-to-one a sufficient distance to deflect the drainage ditch back of any piers occupying the roadbed.

Order flooring in random lengths.

If bearing power of soil is less than one ton per sq. ft., size of footings should be increased accordingly.