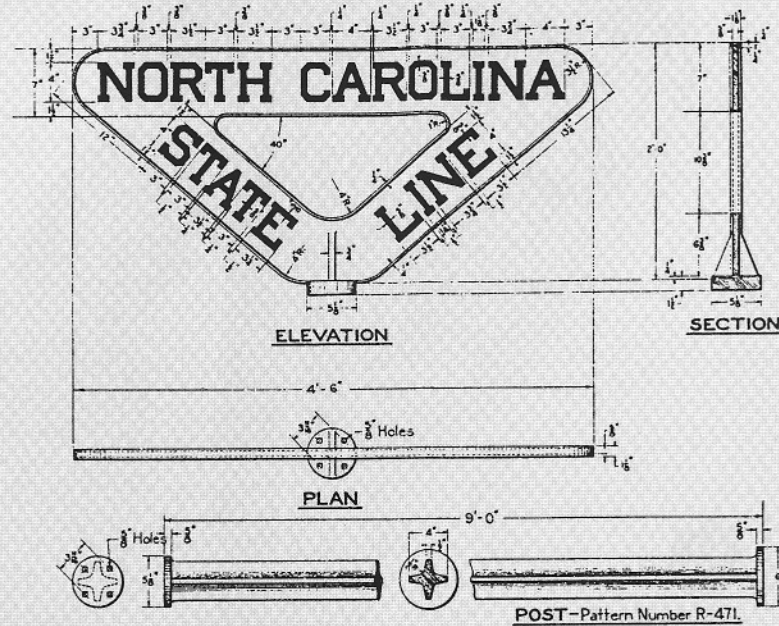
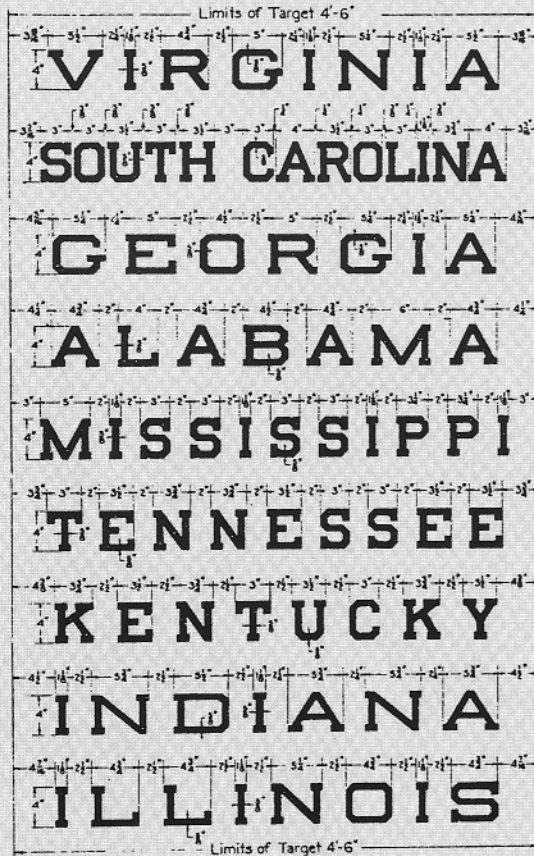


# Standard Plans

DIMENSIONS TO BE USED IN CASTING NAMES OF STATES  
ON STANDARD STATE LINE SIGNS.



**NOTES:**

Post and target to be of cast iron. Target to have  $\frac{1}{8}$ " relief letters on both faces.  
 Letters, beading around target, and base of post for a height of 12" above summit of ballast mound, to be painted black.  
 Remaining portions of post and target to be painted white.  
 Standard ballast mound for cast iron posts to be neatly placed around base and whitewashed.  
 Place post a minimum distance of 11 ft. from center line of track with face at right angles. Post to be planted 3'-0" in ground.  
 Roadmaster must see that sign is accurately placed, and that name of state faces state to which it refers.  
A PATTERN NUMBER IS GIVEN FOR DIMENSIONS OF LETTERING FOR EACH COMBINATION OF STATE NAMES. ALL OTHER DIMENSIONS OF SIGN ARE FIXED. IN ORDERING, CARE MUST BE TAKEN THAT CORRECT PATTERN NUMBER, FOR COMBINATION DESIRED, IS TAKEN FROM THE ACCOMPANYING TABLE.

**TABLE OF PATTERN NUMBERS  
FOR CASTING STANDARD STATE LINE SIGNS**

PATTERN NUMBER	STATE LINE	PATTERN NUMBER	STATE LINE
R - 381	Virginia - North Carolina	R - 388	Tennessee - Alabama
R - 382	North Carolina - South Carolina	R - 389	Alabama - Mississippi
R - 383	South Carolina - Georgia	R - 390	Mississippi - Tennessee
R - 384	North Carolina - Tennessee	R - 391	Georgia - Alabama
R - 385	Tennessee - Kentucky	R - 392	Georgia - North Carolina
R - 386	Tennessee - Virginia	R - 393	Illinois - Indiana
R - 387	Tennessee - Georgia	R - 394	Indiana - Kentucky



**STATE LINE SIGN**

CORRECT:

*J. H. Gatten*

ASST. CHIEF ENGR. M. W. & S.

APPROVED:

*B. Herman*

CHIEF ENGINEER M. W. & S.

APPROVED:

*E. W. ...*

VICE PRES. & GEN'L. MGR.