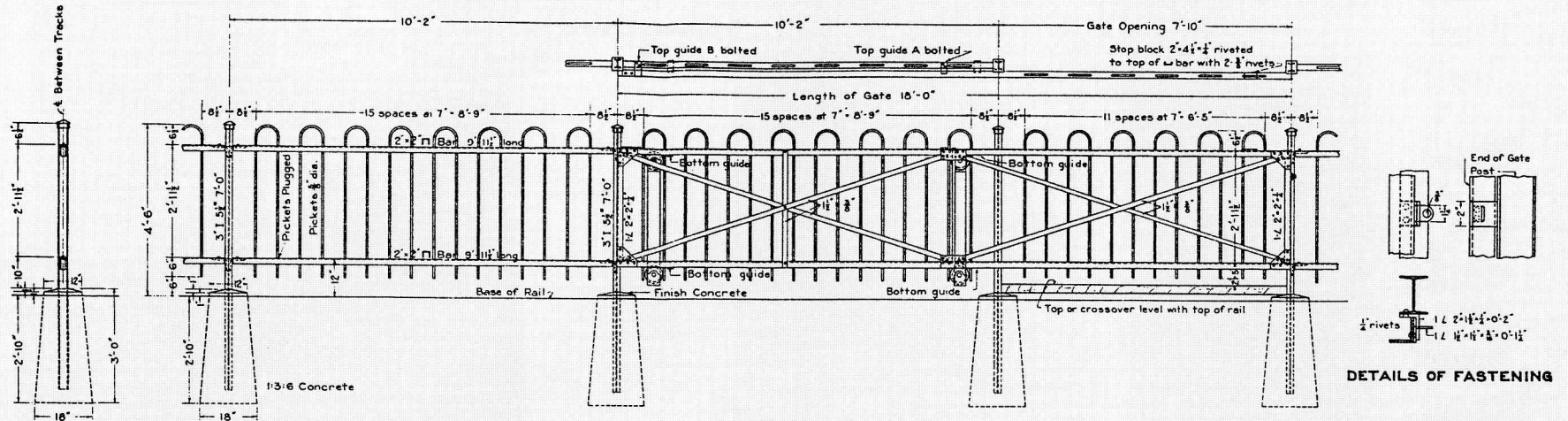


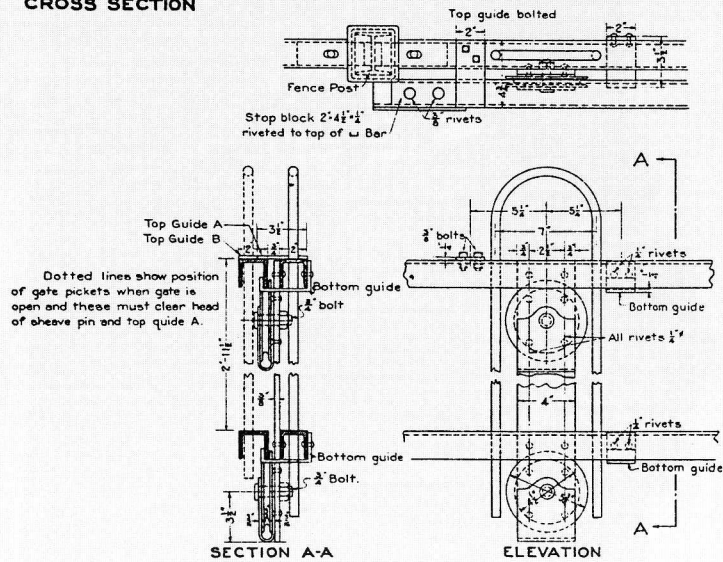
Standard Plans



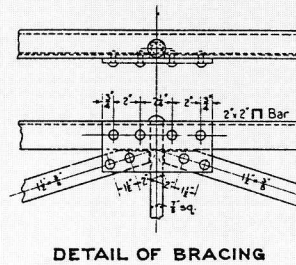
CROSS SECTION

LONGITUDINAL ELEVATION

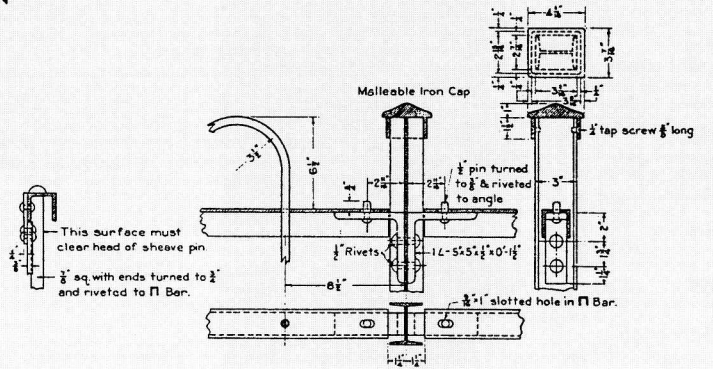
DETAILS OF FASTENING



DETAILS FOR ROLLERS AND GUIDES FOR GATE



DETAIL OF BRACING



DETAILS OF POST CONNECTION AND CAP



FENCE BETWEEN TRACKS

CORRECT:

J. H. Galtin
ASST. CHIEF ENGR. M. W. & S.

APPROVED:

B. Herman
CHIEF ENGINEER M. W. & S.

APPROVED:

E. Brown
VICE PRES. & GENL. MGR.

All members shall have applied one coat of pure red lead at points of contact before assembling, and entire structure shall have one coat of pure red lead before shipment. After erection, apply two coats black paint, Southern Railway System Specification No. 50-A.

December 1, 1916.